

**The National Statistical Committee  
of the Kyrgyz Republic**

**FOOD SECURITY AND POVERTY  
INFORMATION BULLETIN OF THE  
KYRGYZ REPUBLIC**

**2 / 2011**

**Bishkek city 2011**

**The National Statistical Committee  
of the Kyrgyz Republic**

---

**FOOD SECURITY AND POVERTY  
INFORMATION BULLETIN OF THE  
KYRGYZ REPUBLIC**

**2 / 2011**

**Bishkek city 2011**

## ***Food security and poverty information bulletin of the Kyrgyz Republic***

Editorial board:

- Chairman - O. Abdykalykov  
Members: - D. Baijumanov  
- N. Tulegabylov  
- A. Osmonaliev  
- A. Satybaldiev  
- K. Koichumanova  
- R. Plesovskih  
- C. Turdubaeva

For information regarding this publication please contact:

374, Frunze street, Bishkek city;

phone: 996 (312) 324655, 325557;

fax: 66-01-38; web-site: [www.stat.kg](http://www.stat.kg);

e-mail: [nsc\\_mail@stat.kg](mailto:nsc_mail@stat.kg);

The National Statistical Committee of the Kyrgyz Republic;

Sampling survey department.

*Food security and poverty information bulletin of the Kyrgyz Republic* contains the analysis of the situation on food provision in the country for the 1<sup>st</sup> half-year of 2011. The bulletin combines and systematizes materials on food availability, its production, indicators of access to food, data on its consumption per capita.

Annexes of the bulletin contain review of hydro-meteorological conditions on the territory of the Kyrgyz Republic in the II<sup>nd</sup> quarter of 2011, information on average retail prices for food for the II<sup>nd</sup> quarter of 2011, estimates on food balance for the 1<sup>st</sup> half-year of 2011 by basic foodstuff, nutrition balance in kind of energy value by results of integrated survey of 5016 households for 2009-2010, as well as indicators of social protection and food security.

The publication is quarterly.

Copies: 120 in Russian and 35 in English;

The publication is also available in electronic format.

While using statistical data in mass media and scientific papers, disseminating these data through information nets, hard copies, CD discs and other users have to refer to their source (article 17 of the Law on State Statistics).

### **Conventional signs:**

- Event is not existing;
- ... Data are not available;
- 0,0 Negligible and insignificant value.

In separate cases insignificant discrepancies between total and sum of components are explained by rounding.

## Contents

Overview	4
Introduction	5
Section I. Socio-Economic Indicators	6
1.1. Gross Domestic Product	6
1.2. Prices and Tariff Indices	7
1.3. Labour Market	8
Section II. Availability of Food	10
2.1. Agriculture	10
2.1.1. Crop Production	10
2.1.2. Livestock Production	12
2.1.3. Producer Price Index of Agricultural Production	13
2.1.4. Trade of Basic Foodstuffs	14
2.1.5. Availability of Food Per Capita	15
Section III. Access to Food	16
3.1. Consumer Prices Analysis	16
3.2. Money Income of Population	17
List of Abbreviations	20
Methodological explanations	21
Annex:	
1. Review of Hydro-meteorological Conditions on the territory of the Kyrgyz Republic in the 2 <sup>nd</sup> quarter of 2011	23
2. Average Consumer Prices for Food (by regions, 2 <sup>nd</sup> quarter of 2010-2011)	24
3. Food Balance	27
4. Food Balance expressed in nutritional values and compared to calculated daily needs based on surveys of daily intake and on calculated daily needs based on recurrent nutritional surveillance by Socio-Demographic Groups of Population and Regions (2009-2010)	29
5. Food Balance expressed in nutritional values and compared to calculated daily needs, based on surveys of daily intake and on calculated daily needs based on recurrent nutritional surveillance by Quintile Groups and Regions (2009-2010)	37
6. Household Food Balance expressed in value terms based on results of surveys of living standard by Income Quintile Groups and Regions (2009-2010)	42
7. Household Food Balance expressed in value terms based on results of surveys of living standard by Expenditure Quintile Groups and Regions (2009-2010)	48
8. The share of population without access to clean drinking water	54
9. The share of children suffering from underweight	55
10. Social Protection Indicators	56
11. Food Security Indicators of the Kyrgyz Republic	57

## OVERVIEW

*According to preliminary estimates, in January-June 2011, Gross Domestic Product (GDP) calculated by production method was valued at KGS 103492,0 million and in comparison with January-June 2010 GDP has increased by 5,5%.*

*page 6*

*In June 2011, Consumer Price Index characterizing inflation rate, in comparison with the previous month, has made up 100,6% and in comparison with December of the previous year – 107,2%.*

*page 7*

*In January-June 2011, gross output of agriculture, hunting and forestry was valued at KGS 32873,0 million and physical volume index made up 100,9%.*

*page 10*

*In the country, the harvest of agricultural crops has started, and the rate of harvest has increased in comparison with the same date of the previous year.*

*page 12*

*In January-June 2011, producer prices for sold agricultural products have increased in 1,5 times in comparison with the corresponding period of the previous year.*

*page 13*

## Introduction

Pursuant the Rome Declaration, adopted on November 17, 1996 during the World Food Summit, the Kyrgyz Republic as a member of the international community assumed responsibility to "...conduct a policy aimed to the alleviation of poverty and inequality, provision of physical and economical access to all people and at all times to sufficiently dietary adequate food and as well as to its use".

In 1999, the Government of the Kyrgyz Republic, in cooperation with the European Commission in the Kyrgyz Republic has developed and adopted a National Food Security Policy. The policy (and EC funding under the EC-Food Security Programme) sustains reforms in food security related to such sectors as agriculture and social protection.

**Food security** is a physical availability of a foodstuff in the required quantity, possibility of access to indicated foodstuff (the products made in households, and acquired through the market, gifts and other sources) and consumption of foodstuff in that quantity which are necessary for maintenance of food needs.

Food and nutrition security presumes the availability of adequate food (in the context of quantity, quality, safety and social and cultural acceptability), provision of access and adequate consumption and digestion of such products by all persons at any time for an active and healthy life.

**Food Availability:** physical existence of quantitatively and qualitatively adequate and safety food items at any moment of time.

**Access:** all households and household members have sufficient resources to obtain appropriate food (through production, purchase or donation).

**Stability:** continuous provision of availability, access and use of food. If there is no stability, individuals will suffer from chronic or transitory food insecurity

The aim of the KR Food Security and Poverty Information Bulletin is to provide up-to-date and reliable information and analysis of the current food security situation in the country.

The publication of information bulletin was prepared by the National Statistical Committee of the Kyrgyz Republic. The publication contains information provided by State Agency on Hydro Meteorology of the Ministry of Emergency of the Kyrgyz Republic. The bulletin was financed by the European Commission in the Kyrgyz Republic and technical support was provided by UN FAO.

## Section I. Socio-Economic Indicators

*The below socio-economic indicators characterizes the general situation of economy in the country for the analysis of food security situation.*

### 1.1. Gross Domestic Product

**Gross domestic product (GDP)** calculated by *production method*, in January-June 2011, according to preliminary estimation, has been valued at 103492,0 million KG Soms and has increased by 5,5% in comparison with January-June 2010. Real growth rate of GDP excluding «Kumtor» mining company made up 4,6%. The volume of GDP calculated per capita made up 19,8 thsd. soms and in comparison with the corresponding period of the previous year has increased by 4,4%.

**Table 1: Main socio-economic indicators**

	2010	January-June	
		2010	2011
Average annual number of present population, mln. people	5,19	5,18	5,24
Nominal GDP, mln.soms	212177,4	84535,3	103492,0
in % to GDP:			
agriculture	18,5	11,4	10,8
industry and construction	25,1	26,7	28,5
services	45,9	50,4	48,3
GDP per capita, thsd. soms	40,9	16,3	19,8
GDP growth rate, %	98,6	104,4	105,5
CPI <sup>1</sup>	108,0	102,9	121,4
CPI for foodstuff and nonalcoholic beverages (soft drinks) <sup>1</sup>	106,5	97,9	134,8
CPI for services <sup>1</sup>	107,2	104,0	111,7
Number of employed population thsd. people <sup>5</sup>	2243,7	-	-
Average monthly wage and salary, soms	7189	6492 <sup>2</sup>	7822 <sup>2</sup>
Import, mln. US dollars <sup>3</sup>	3222,8	1336,2	1745,3
Export, mln. US dollars <sup>3</sup>	1755,9	768,34	916,2
Exchange rate of KG som to <sup>4</sup> :			
US dollars	45,96	45,15	46,80
Euro	61,06	60,15	65,75
RUR	1,51	1,51	1,64
KZT	0,31	0,31	0,32
Subsistence level, soms	3502,65	3433,85	4609,04

<sup>1</sup> In % to the corresponding period of the previous year.

<sup>2</sup> Excluding small enterprises, January-May.

<sup>3</sup> Including volumes of external trade implemented by individuals.

<sup>4</sup> According to data of the National Bank of the Kyrgyz Republic.

<sup>5</sup> Annual data.

## 1.2. Prices and Tariff Indices

In June 2011, *Consumer Price Index (CPI)* characterizing inflation rate, in comparison with the previous month has made up 100,6%, and in comparison with December of the previous year - 107,2%.

In June 2011, prices for *foodstuff and nonalcoholic beverages (soft drinks)* in comparison with the previous month have increased, in general, by 0,6%. Prices for animal fat have increased by 8,4%, fresh meat – by 4,2%, cereals – by 2,1%, rice – by 1,2%.

At the same time, prices for milk and dairy products, flour, pasta, vegetable oil have decreased.

**Table 2: Prices index for main types of food products**

(as a % to the previous month)

	Wheat flour		Bread	Ashcake	Beef	Mutton	Milk	Eggs	Sunflower oil
	High quality	First grade							
January	102,2	101,9	100,7	101,1	105,7	109,4	105,6	106,6	100,6
February	104,7	106,2	103,1	102,7	103,5	105,4	108,9	95,9	100,0
March	107,8	111,1	105,7	102,2	100,4	101,9	92,5	94,2	101,3
I <sup>st</sup> quarter <sup>1</sup>	115,4	120,2	109,7	106,1	109,8	117,6	106,3	96,3	101,9
April	101,4	100,4	100,7	100,1	99,3	99,8	95,5	100,3	100,8
May	99,3	98,1	98,2	100,0	101,8	102,7	89,8	97,1	100,8
June	99,1	98,0	100,0	99,9	104,2	105,0	93,5	97,6	98,2
II <sup>nd</sup> quarter <sup>1</sup>	99,8	96,5	98,9	100,0	105,4	107,7	80,2	94,9	99,9

<sup>1</sup>Cumulative total for three months of the quarter.

In June 2011, fresh fruits have increased by 6,2% and fresh vegetables have decreased by 11,5% as compared to the previous month.

**Table 3: Prices index for selected types of fruits and vegetables**

(as a % to the previous month)

	Carrot	Onion	Cabbage	Beet	Cucumber	Tomato	Apples	Potatoes
January	130,6	124,3	177,5	135,7	149,9	109,1	109,6	138,0
February	100,1	115,0	128,7	118,4	96,6	90,8	104,0	101,0
March	101,0	93,6	110,0	108,1	102,5	138,8	105,1	92,8
I <sup>st</sup> quarter <sup>1</sup>	132,0	133,7	в 2,5 p.	173,5	148,3	137,4	119,7	129,3
April	106,0	98,7	110,4	130,8	78,5	91,9	111,2	89,7
May	101,5	126,5	70,9	116,9	46,2	73,5	121,7	93,8
June	118,7	87,1	50,4	93,8	33,0	63,1	111,4	143,9
II <sup>nd</sup> quarter <sup>1</sup>	127,7	108,8	39,4	143,4	12,0	42,6	150,8	121,1

<sup>1</sup>Cumulative total for three months of the quarter.

In January-June 2011, foodstuff and nonalcoholic beverages (soft drinks) have increased in general by 11,9%, of which cereals – in 1,8 times, fresh meat – by 16,5%, flour – by 15,7%, sugar – by 15,6%, bread – by 7,9%, vegetable oil – by 4,8%. Since the beginning of 2011, prices for fresh fruits have increased by 22,8%, fresh vegetables – by 3,3%.

**Table 4: Prices index for selected groups of food products**

(as a %)

	June 2011			January-June 2011 to January-June 2010
	to June 2010	to December 2010	to May 2011	
Bakery products and grains	144,9	112,7	99,3	141,2
Meat	137,2	114,9	103,5	134,1



	June 2011			January-June 2011 to January-June 2010
	to June 2010	to December 2010	to May 2011	
Fish	112,7	103,8	100,8	113,2
Milk products, cheese and eggs	112,9	95,6	97,3	115,3
including eggs	110,5	91,4	97,6	112,9
Oils and fats	138,4	105,1	99,4	139,1
Fruits	142,7	119,8	105,2	141,2
Vegetables	155,3	115,4	100,3	149,4
Sugar, jam, honey, chocolate and sweets	123,8	113,2	100,3	119,2
Soft drinks	117,6	108,6	102,7	115,9

In June 2011, average prices for main consumer goods, such as beef and mutton, potatoes have increased in comparison with the previous month, and at the same time prices for flour and bread have decreased.

**Table 5: Average prices for selected representative goods**  
(in soms per kilo)

	Wheat flour		Bread	Ashcake	Mutton	Beef	Potato
	High quality	First grade					
January	34,02	28,30	35,36	42,30	248,18	251,59	26,41
February	35,54	30,03	36,44	43,39	262,00	260,68	27,33
March	38,25	33,34	38,52	44,30	267,29	261,85	25,63
April	38,80	33,51	38,78	43,84	266,62	259,80	22,70
May	38,54	32,89	38,08	43,84	273,42	264,39	20,58
June	38,23	32,29	38,07	43,62	287,21	274,97	28,96

More detailed information on dynamics of prices for food products is provided in Section III «Access to food».

According to the preliminary data for the 1<sup>st</sup> half of 2011, import of foodstuff has made up 14,2% of total volume of import.

**Table 6: Import and export of foodstuff<sup>1</sup>**

	1 <sup>st</sup> half of year			
	2010		2011 <sup>2</sup>	
	mln dollars	as a percent to total volume	mln dollars	as a percent to total volume
Import	163,8	12,3	247,6	14,2
Export	59,1	7,7	88,6	9,7

<sup>1</sup> Including volumes of external trade implemented by individuals.

<sup>2</sup> Data are preliminary.

### 1.3. Labour Market

As of July 1, 2011, according to the data of the Ministry of Labor, Employment and Migration of the Kyrgyz Republic, the number of unemployed population registered in state employment services who search for work, in comparison with the same date of 2010, has decreased by 0,7% and the number of unemployed - by 2,3%. The registered unemployment rate has made up 2,6% of the economically active population.

**Table 7: The number of unemployed population registered in state employment services, as of July 1, 2011**

	Total thsd. people	of which unemployed		
		thsd. people	as a percent to the corresponding date of the previous year	as a percent to the corresponding date of the previous month
<b>Kyrgyz Republic</b>	<b>101719</b>	<b>65080</b>	<b>97,7</b>	<b>99,6</b>
Batken oblast	8061	5339	86,6	101,8
Djalal-Abad oblast	22284	12655	86,4	98,5
Issyk-Kul oblast	5376	4543	100,1	98,3
Naryn oblast	11404	6663	97,5	99,9
Osh oblast	16455	14184	101,9	100,4
Talas oblast	3878	2502	106,2	100,9
Chui oblast	8600	6337	95,6	99,6
Bishkek city	13771	10468	106,2	98,8
Osh city	7617	2389	145,2	100,5

## Section II. Availability of Food

**Availability of food** – is a physical availability of safety and sufficient, quantitative and qualitative food at any time.

### 2.1. Agriculture

In January-June 2011, gross output of agriculture, hunting and forestry products was valued at 32873,0 million KG Soms and the physical volume index has made up 100,9%.

**Table 8: Output of agricultural products**

	As a percent to			
	the corresponding period of the previous year		the previous month	
	2010	2011	2010	2011
January	101,8	100,8	-	-
February	102,0	100,4	106,3	105,9
March	102,6	100,5	106,9	107,1
January-March	102,1	100,5	-	-
April	102,7	100,6	107,3	107,4
May	101,5	100,4	140,8	142,3
June	100,1	102,2	122,0	124,5
January-June	100,1	100,9	-	-

The share of state and collective farms in the structure of gross output of agriculture, hunting and forestry products has made up 2,6% of total production volume. The main part of products are produced by peasant farms (47,5%) and by private subsidiary plots of citizens (47,2%).

From total agricultural production the share of livestock has made up 83,4%, crop production - 13,8%, services – 2,5%, hunting and forestry – 0,3%.

**Table 9: Gross output of agriculture, hunting and forestry products on the territory in January-June 2011**

	Mln. soms (in current prices)	As a percent to	
		the previous year	total
<b>Kyrgyz Republic</b>	<b>32873,0</b>	<b>100,9</b>	<b>100,0</b>
Batken oblast	2230,3	99,9	6,8
Djalal-Abad oblast	5709,6	102,6	17,4
Issyk-Kul oblast	4179,2	100,2	12,7
Naryn oblast	2908,0	100,3	8,8
Osh oblast	6392,7	102,2	19,4
Talas oblast	1816,3	97,4	5,5
Chui oblast	8674,3	101,1	26,4
Bishkek city	644,6	98,3	2,0
Osh city/	318,0	100,5	1,0

#### 2.1.1. Crop production

In the country, the sowing of agricultural crops finished and the harvesting has started.

Total sown area under agricultural crops for the current year harvest has made up 1159,2 thsd. hectares, that is higher by 13,5 thsd. hectares or by 1,2% than in 2010.

**Table 10: Sown area under agricultural crops for the 2011 harvest**

	thsd. hectares		As a % to 2010
	Sowed for 2011 harvest	increase (+), decrease (-) of areas to 2010	
<b>Sown areas - total</b>	<b>1159,2</b>	<b>13,5</b>	<b>101,2</b>
including by sowing period:			
winter	259,9	-11,2	95,9
spring	642,1	19,2	103,1
permanent grasses of previous years	257,2	5,5	102,2
from total sown area by type of crops:			
Grains and leguminous	631,4	5,7	100,9
wheat	377,6	0,9	100,2
barley	124,2	-1,2	99,1
Corn for grain	74,5	1,2	101,6
Industrial crops	105,0	10,2	110,8
cotton	37,4	10,7	140,2
sugar beet	8,5	0,1	101,1
tobacco	4,1	0,02	100,6
oil plants	54,7	-0,6	98,9
Potatoes, vegetables and melons	134,7	1,1	100,8
potatoes	84,9	0,6	100,7
vegetables	42,8	0,9	102,0
melons	7,0	-0,3	95,9
Fodder crops	288,0	-3,5	98,8

The unused arable land area decreased by 10,9 thsd. hectares in comparison with the previous year and made up 111,5 hectares.

**Table 11: Unused arable land area by causes in 2011***(thsd. hectares)*

	Total
<b>Unused - total</b>	<b>111,5</b>
including by causes:	
salting and swampy	6,1
lack of seed grain	1,1
absence of irrigation, defects in irrigation system	14,0
economical inefficiency (hard dryland)	56,7
remoteness and stony	21,8
lack of fuel and oil, and equipment (machinery)	3,1
lack of funds	3,4
natural disasters (earthfall, mudflow)	0,6
using for construction	0,2
allotment of land for cemetery	0,1

	<b>Total</b>
reclamation, capital planning	0,1
allotment of land for industry	1,1
extension of inhabited localities	2,9
specially protected territory	0,2
reluctance to cultivate the land	0,01
empty houses	0,1

In the country, the harvest of agricultural crops started and the harvesting rate has increased in comparison with the same date of the previous year.

**Table 12: Harvest of agricultural crops as of June 23, 2011**

	Actual		To the corresponding date of the previous year	
	2010	2011	+, -	as a %
Grains and leguminous harvested, thsd. hectares	3,5	5,4	1,8	151,3
Grains threshed - total (in primary received weight), thsd. tones	11,3	15,5	4,2	137,4
from 1 hectare, centner	31,8	28,9	-2,9	90,9
wheat threshed (in primary received weight), thsd. tones	10,4	12,3	1,9	118,0
Potatoes dug out, thsd. hectares	1,3	1,5	0,2	113,7
Potatoes dug out, thsd. tones	19,0	22,4	3,4	118,1
from 1 hectare, centner	142,4	148,0	5,6	103,9
Vegetables collected, thsd. tones	23,8	29,8	6,0	125,2
Melons collected, thsd. tones	4,2	2,1	-2,1	49,4
Fruits and berries collected, thsd. tones	3,7	4,1	3,7	109,9

### 2.1.2. Livestock Production

In January-June 2011, the production of main livestock products (excluding milk production) has increased in comparison with the corresponding period of the previous year.

**Table 13: Production of main livestock products in farms of all categories in January-June 2011**

	Produced-total, tones				As a % to the corresponding period of the previous year			
	2010		2011		2010		2011	
	June	January-June	June	January-June	June	January-June	June	January-June
Livestock and poultry for slaughter (in live weight)	26376	157011	26716	158430	101,6	101,6	101,3	100,9
Raw milk	158596	628421	157646	627528	103,3	103,5	99,4	99,9
Eggs, mln. pieces	42248	191427	46141	201846	99,6	102,9	109,2	105,4

Production of livestock products has grown in many regions of the country.

**Table 14: Production of main livestock products by territory in January-June 2011**

	<b>Livestock and poultry for slaughter (in live weight), tones</b>	<b>Raw milk, tones</b>	<b>Eggs thsd. pieces</b>
<b>Kyrgyz Republic</b>	<b>158430</b>	<b>627528</b>	<b>201846</b>
Batken oblast	10756	41311	7993
Djalal-Abad oblast	23205	116842	25776
Issyk-Kul oblast	20134	90687	36242
Naryn oblast	21909	45711	2738
Osh oblast	31488	136403	23567
Talas oblast	11464	33647	10601
Chui oblast	38724	159262	93458
Bishkek city	162	388	753
Osh city	588	3277	718
<b>As a percentage to the previous year</b>			
<b>Kyrgyz Republic</b>	<b>100,9</b>	<b>99,9</b>	<b>105,4</b>
Batken oblast	100,9	100,0	94,5
Djalal-Abad oblast	101,6	100,9	105,7
Issyk-Kul oblast	100,3	100,5	97,7
Naryn oblast	100,4	100,4	100,8
Osh oblast	101,3	101,9	102,9
Talas oblast	100,4	88,9	97,2
Chui oblast	100,9	99,5	111,9
Bishkek city	98,2	80,7	99,7
Osh city	100,5	101,9	101,7

**2.1.3. Producer Price Index of Agricultural Production**

In January-June 2011, producer prices for sold *agricultural products* have increased by 1,5 times in comparison with the corresponding period of the previous year.

**Table 15: Producer price index of agricultural production**  
(as a %)

	<b>Total</b>		<b>including for production</b>			
	<b>to the previous period</b>	<b>to December of the previous year</b>	<b>Crop production</b>		<b>Livestock</b>	
			<b>to the previous period</b>	<b>to December of the previous year</b>	<b>to the previous period</b>	<b>to December of the previous year</b>
January	106,3	106,3	112,9	112,9	99,0	99,0
February	104,4	110,9	106,5	120,3	101,8	100,8
March	99,5	110,5	99,9	119,0	100,3	101,1
April	102,4	113,0	104,0	123,8	100,2	101,3
May	106,0	119,9	100,0	123,8	114,0	115,5
June	100,1	120,0	103,0	127,5	96,8	111,8

In comparison with January-June 2010, the highest growth of prices for grain – by 2,0 times, vegetables- by 1,7 times and meat – by 1,2 times was noted.

**Table 16: Producer price index of selected types of agricultural production in January-June 2011**

(as a %)

	Grain total	Wheat	Vegetables	Potatoes	Meat (in live weight)	Raw milk	Eggs
<i>To the previous month</i>							
January	117,3	114,9	104,6	138,0	104,0	88,5	105,5
February	115,6	115,2	110,4	93,6	103,3	97,8	108,4
March	103,7	106,9	99,7	90,1	99,7	102,2	97,8
April	109,2	107,9	98,6	107,8	100,9	99,7	87,9
May	102,5	104,2	100,4	88,8	112,0	119,7	108,0
June	100,0	103,7	105,7	102,3	97,8	95,8	82,1
<i>To the corresponding period of the previous year</i>							
January	174,6	193,9	165,7	229,3	112,6	90,3	109,0
February	197,5	220,6	185,6	190,0	116,8	100,9	125,6
March	204,9	229,1	179,6	165,7	116,5	100,9	117,1
April	227,6	252,6	175,4	186,8	117,6	99,9	104,3
May	225,9	249,0	168,5	178,1	132,8	138,7	111,5
June	214,0	250,9	171,0	201,8	131,4	135,0	91,9
January-June	207,6	233,3	174,1	190,9	121,2	109,3	109,8

#### 2.1.4. Trade of Basic Foodstuffs

According to preliminary data, the share of foodstuff import in total import value for the 1<sup>st</sup> half of 2011 has made up 14,2%, export – 9,7%.

**Table 17: Import and export of basic foodstuff**

(thsd. tons)

	January-June	
	2010	2011*
<b>Import</b>		
Bakery products expressed in grain	194,6	211,7
Sugar and confectioneries	27,7	40,4
Vegetable oil	18,0	15,6
The share of foodstuff in total import value, %	12,3	14,2
<b>Export</b>		
Milk and dairy products expressed in milk	33,7	24,5
Sugar and confectioneries	0,3	0,4
The share of foodstuff in total export value, %	7,7	9,7

\* Data are preliminary.

#### 2.1.5. Availability of Food Per Capita

The analysis of food balance shows that the availability of foodstuffs per capita in average for month remains stable (see Table 18 and Annex 3).

**Table 18: Level of consumption of basic foodstuff**  
(per capita, kg per month)

	January-June	
	2010	2011*
Bakery products (expressed in grain)	15,9	15,9
of which wheat and wheat processed products (expressed in grain)	13,4	14,2
Potatoes	8,3	8,1
Vegetables and melons	6,3	4,4
Fruits and berries	0,5	0,5
Sugar and confectioneries	1,7	1,7
Meat and meat products	3,3	3,3
Milk and dairy products	16,5	16,5
Eggs, pieces	5,6	5,9
Vegetable fats	1,0	1,0

\*Data are preliminary

More detailed information is provided in Annex (table 3 «Food balance»<sup>2</sup>).

<sup>2</sup> Food balances were compiled in accordance with «Methodology of calculation of basic foodstuff balance», approved by the Decree of the National Statistical Committee of the Kyrgyz Republic from September 15, 2010, №19.



## Section III. Access to Food

*Access: Foodstuff must be accessible both in terms of their physical availability and in terms of purchasing power.*

### 3.1. Consumer Price Analysis

In the 1<sup>st</sup> half of 2011, *Consumer Price Index*, characterizing the inflation rate, has made up 107,2%. In the 1<sup>st</sup> quarter of 2011, monthly average price growth made up 2,1%, while in the 2<sup>nd</sup> quarter of 2011, it was observed the slowdown of price growth rate up to 0,3% per month.

In January-June 2011, prices for consumer goods have increased in all regions of the country. The maximum growth of prices for consumer goods was in Naryn oblast (by 13,4%) and Issyk-Kul oblast (by 11,4%).

In the 1<sup>st</sup> half of 2011, consumer prices for foodstuff and alcoholic beverage have increased by 11,9%, against 3,4% in January-June 2010. Foodstuff and nonalcoholic beverages have increased most of all in Naryn oblast – by 19,0%.

Since the beginning of 2011, bakery products and cereals have increased by 12,7%. But, in the 2<sup>nd</sup> quarter of 2011, prices for bakery products and cereals have decreased in general by 0,7%, that was mainly the result of decrease of prices for flour (by 2,6%) and bread (by 0,8%). At the same time, in January-June 2011, rice has increased by 3,8%, bread – by 7,9%, flour – by 15,7%, pasta – by 16,9%, cereals – in 1,8 times.

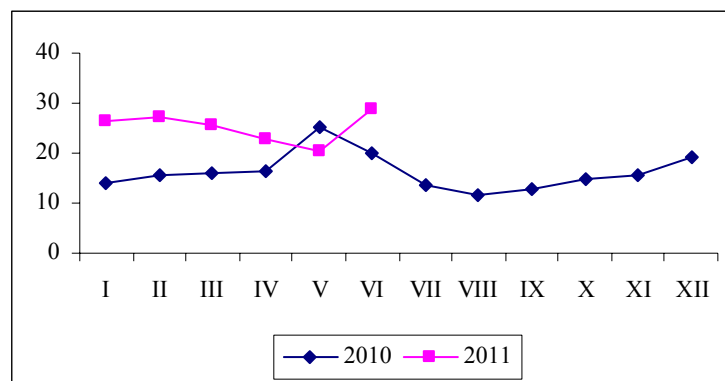
In the 1<sup>st</sup> half of 2011, it was observed also the increase of prices for sugar by 15,6%, meat – by 14,9%, tea and coffee – by 10,2%, confectioneries – by 10,0%, vegetables oil – 4,8%. Hereat, prices for dairy products, cheese and eggs have decreased in general by 4,4%.

In January-June 2011, fruits and vegetables increased by 16,5%. Fruits increased by 19,8%, vegetables – by 15,4%.

**Potatoes.** During the 2<sup>nd</sup> quarter of 2011, average consumer prices for potatoes have increased from 22,70 soms per kilo in April to 28,96 soms in June, and the increase has made up 27,6%. In comparison with the 2<sup>nd</sup> quarter of 2010, the average consumer price has increased by 17,5% and made up 24,19 soms per kilo.

**Graph 1: Monthly average consumer prices for potatoes**

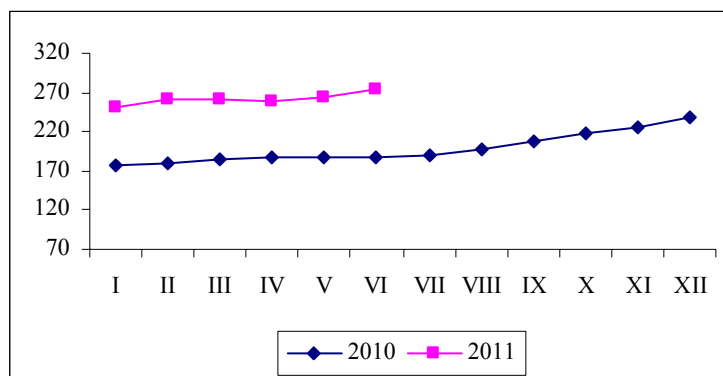
(soms per kg.)



**Mutton.** In the 2<sup>nd</sup> quarter of 2011, the average consumer price for mutton has increased from 192,30 soms to 275,93 soms per kilogram or the increase has made up 43,5 % in comparison with the 2<sup>nd</sup> quarter of 2010.

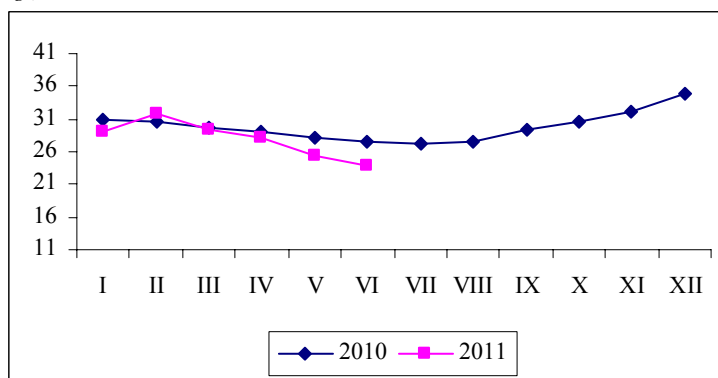
**Beef.** On average from April to June 2011, prices for beef have increased from 259,80 soms per kilogram in April to 274,97 soms in June and in comparison with the 2<sup>nd</sup> quarter of 2010 their growth have made up 42,8 %.

**Graph 2: Monthly average consumer prices for beef**  
(soms per kg.)



**Fresh milk.** During the 2<sup>nd</sup> quarter of 2011, price for milk has decreased by 14,9% and in comparison with the 2<sup>nd</sup> quarter of 2010, average consumer price decreased by 8,5% and made up 25,90 soms per kilogram.

**Graph 3: Monthly average consumer prices for fresh milk**  
(soms per kg.)



### 3.2. Money Income of Population

According to results of households sampling survey, nominal money income per capita in 2010 was valued at 2644,5 KG soms per month and in comparison with the previous year have increased by 9,0 %. The main source of population money income was income from labour activity, its share in income structure made up 63,6%. The second significant article about population income was incomes from social transfers – 16,4% and from sale of agricultural output produced in private subsidiary plot – 12,9%.

Monthly average per capita real money income of the population in 2010 was valued at 2448,6 KG soms. The real average per capita money income has increased by 0,9% in comparison with the previous year.

Size of average per capita disposable income was valued at 2494,4 KG soms. Average per capita disposable money incomes of population living in Bishkek city (by 530,1 soms) and Chui oblast (by 292,5 soms) were higher than average republican level. Disposable incomes of population living in Issyk-Kul oblast (2565,9 soms) were close to average republican level. Incomes of population living in Naryn oblast (1988,0 soms), Talas oblast (2099,2 soms), Osh oblast (2295,6 soms), Djalal-Abad oblast (2314,8 soms) and in Batken oblast (2404,6 soms) were considerably less than average republican level.

The structure of disposable money incomes of households differ significantly depending on their place of residence. In urban areas, income from labour activity in total revenue has made up 74,9%, in rural areas – 52,7%. The second most important source of income in rural areas was the proceeds of the sale of products produced in private subsidiary plots of population and their share made up 26,7%.

Distribution of total money income by quintile groups of population is for the benefit of 20 % of population with the highest incomes, who have concentrated about 44% of all money incomes.

**Table 19: Population money income by quintile groups**  
(as a percent)

	2009	2010
<b>Money income -total</b>	<b>100</b>	<b>100</b>
including 20 percent groups		
the first (with the lowest income)	6,4	6,4
the second	11,1	11,1
the third	15,9	15,9
the fourth	22,9	23,0
the fifth (with the highest income)	43,8	43,7
Income ratio of 20% highest and 20% lowest income groups of population, by times	6,9	6,9

The monthly average nominal wages/salaries per employee in January-May 2011 (excluding small enterprises) was valued at 7822 KG soms and in comparison with January-May 2010 has increased by 20,5%, and its real size calculated including consumer price index has decreased by 0,5%.

Based on official exchange rate stated by the National Bank of the Kyrgyz Republic, monthly average wage/salary in January-May 2011 has made up 165,1 US dollars.

**Table 20: Monthly average nominal and real wages/salaries by territory<sup>1</sup>**  
in January-May 2011

	Soms	As a percent to the corresponding period of the previous year		Real salaries/wages as a percent to the corresponding period of the previous year
		2010	2011	
<b>Kyrgyz Republic</b>	<b>7822</b>	<b>112,6</b>	<b>120,5</b>	<b>99,5</b>
Batken oblast	5468	112,8	124,8	99,2
Djalal-Abad oblast	6761	107,7	121,4	99,0
Issyk-Kul oblast	5565	109,3	127,5	105,8
Naryn oblast	6919	111,0	122,2	95,4
Osh oblast	4576	111,0	130,1	104,4
Talas oblast	5874	125,6	121,2	101,5

	Soms	As a percent to the corresponding period of the previous year		Real salaries/wages as a percent to the corresponding period of the previous year
		2010	2011	
Chui oblast	6519	115,4	118,7	97,9
Bishkek city	10938	112,4	117,7	98,4
Osh city	7039	116,2	118,0	94,7

<sup>1</sup> Excluding small enterprises.

In January-May 2011, growth of wage/salary was observed in all types of economic activity in comparison with the same period of the previous year.

Wages/salaries of employees engaged in financial activity (in 2,6 times), transport and communication (in 1,8 times), production and distribution of energy and electricity, gas and water (in 1,5 times) was significantly higher than average republican level. Its lowest level was in education (65,9%), health (63,7%), agriculture (58,9%), provision of communal, social and personal services (75,7% of average republican level).

The sum of total debt on payment of wages/salaries as of June 1, 2011 by country as a whole has increased by 21,7% in comparison with the same date of 2010, and has decreased by 1,2% in comparison with the same date of the previous month.

**Table 21: Total debt on payment of salaries/wages on the territory<sup>1</sup> as of June 1, 2011**

	Mln. Soms	As a % to the corresponding period of	
		the previous year	the previous month
<b>Kyrgyz Republic</b>	<b>308,3</b>	<b>121,7</b>	<b>98,8</b>
Batken oblast	29,9	92,5	95,8
Djalal-Abad oblast	58,8	111,0	66,6
Issyk-Kul oblast	41,4	152,0	118,3
Naryn oblast	17,4	175,3	141,3
Osh oblast	0,2	20,1	в 2,3 p.
Talas oblast	6,0	125,0	96,2
Chui oblast	66,8	109,2	109,3
Bishkek city	40,8	214,0	117,7
Osh city	47,0	105,1	108,7

<sup>1</sup> Excluding small enterprises.

## List of Abbreviations

<b>GDP</b>	Gross Domestic Product/ Валовой внутренний продукт ( <b>ВВП</b> )
<b>WHO</b>	World Health Organization/ Всемирная организация здравоохранения ( <b>ВОЗ</b> )
<b>GMCL</b>	Guaranteed Minimum Consumption Level/Гарантированный минимальный уровень потребления ( <b>ГМУП</b> )
<b>UMB</b>	Unified (one-time) Monthly Benefit (payment)/Единые ежемесячные пособия ( <b>ЕЕП</b> )
<b>EC</b>	European Commission/Европейская Комиссия ( <b>ЕК</b> )
<b>CPI</b>	Consumer Price Index for goods and paid services to population/Индекс потребительских цен ( <b>ИПЦ</b> ) на товары и платные услуги населению
<b>EC FSP</b>	European Commission Food Security Program/Программа Продовольственной Безопасности Европейской Комиссии ( <b>ППБ ЕК</b> )
<b>FAO</b>	UN Food & Agriculture Organization/Продовольственная и Сельскохозяйственная Организация ООН ( <b>ФАО</b> )
<b>MCB</b>	Minimum Consumer Budget/Минимальный потребительский бюджет ( <b>МПБ</b> )

## Methodological explanations

**The unemployed** – people at the age of 16 years and over who during the period under review had no job (income-generating occupation); who were in search for a job i.e. applied to state employment service or used alternative ways of job finding as well as those who were ready to start working.

**Gross Domestic Product (GDP)** – a general indicator of economic activity of the country, which is calculated in current market prices (GDP nominal) and in comparable prices (GDP real).

**Consumer price index for goods and paid services to population (CPI)** – characterises the change in the general price level for goods and services over time. The index measures the correlation of the value of actually fixed set of goods and services during the given period to its value during the basic period.

**Monthly average nominal salary** is calculated by dividing actually accrued salary fund of the staff and part-time employees to the number used for the calculation of average salary and to the number of months in a reporting period.

**Average daily per capita calorie** characterizes energy value and calories in consumed food products per one household member as well as chemical composition in proteins and fats.

**Official unemployment level** – is the ratio of people officially registered as unemployed to the number of economically active population expressed in percent.

**Availability of food** refers to the physical quantities of food at the disposal of the population as a result of domestic food production or market. At the national level availability of food is defined as a combination stocks, commercial import, food aid and own production. Following aspects also refer to availability: climatic conditions, the areas harvested, animal numbers and productivity, producer prices for food, food prices in neighboring countries, and the national policies which determine production, trade, distribution and pricing.

The availability of food per capita is calculated using food balance. A food balance shows for each basic foodstuff the total physical availability and consumption of that foodstuff over a given period of time, usually for 1 year. Total **physical availability** is the sum of opening stocks, production and import in that product in a given period of time. **Total use** is human consumption + animal feed + seeds + losses + exports. Drawn up over a succession of years, food balances usually reveal a trend in total availability, import, export, and the availability of food for human consumption and for fodder. Dividing the annual amount of food available for human consumption by the population gives a key indicator of availability: the average availability of food per capita per year. This measure of food availability is a national average, which does not take into account households' access (i.e. ability to produce, purchase or otherwise obtain) to food.

**Access to food** refers to the ability of household members to obtain adequate safety and appropriate foods to meet their needs for a healthy and active life. Access can be through production for own consumption, market purchases or donations/transfers. Access differs between households according to employment status, income, family size, location etc. Elements that affect the access also include social security, payment delays in salaries and wages, inflation, the cost of essential foodstuff and other goods and services. National policy, which affects employment, income and inflation, also affects significantly households' access to food.

**Use of food** refers to the selection, composition, preparation and allocation of food within the household. Utilization of food refers to the ability of the human body to take and use food within the body and convert food into energy. Food use covers knowledge of appropriate diets, and proper allocation of food within the family. The ability of the body to utilize food is affected by its state of health and access to clean drinking water, access to basic health services, food cooking and food storage. The ultimate measure of food security is the nutritional status of the population.

## Annex

### Review of hydro-meteorological conditions on the territory of the Kyrgyz Republic in the 2<sup>nd</sup> quarter of 2011.

(Source: according to data of the State Agency on Hydrometeorology of the Ministry of Emergency of the Kyrgyz Republic)

#### Agro meteorological conditions:

**April.** Monthly average temperature of air in the most regions was above the normal by 2...4 degrees, in Alai and Issyk-Kul regions, on Chon-Ashuu Pass and in Kumtor tract was above the normal by 1 degree.

Rainfall in the most regions of the country was below the normal by 24-77 %, in Jaiyl, Nookat, Toktogul, Aksyi, Ak-Sui regions, on the west of Issyk-Kul and Kara-Sui regions, in foothills of Chui oblast and in Talas Valley was close to normal by 83-112%, in Jeti-Oguz region, At-Bashy region, on the east of Issyk-Kul region and in Kumtor tract was 120-183% of normal.

**May.** Monthly average temperature of air in the most regions was above the normal by 1,5...3 degrees, and in pediment regions of Chui oblast was above the normal by 1 degree.

Rainfall in the most regions of the country was above the normal by 120-166%, in Sokuluk, Kara-Buura, Batken, Uzgen, Bazar-Korgon, Jeti-Oguz regions, in Kumtor tract and on Chon-Ashuu Pass was close to normal by 80-110%, in Aksyi, Kara-Sui, Suzak regions, in Chatkal and Kara-Kujur Valleys was below the normal by 59-73%, in Leilek region was 13% of normal.

**June.** Monthly average temperature of air in the most regions was above the normal by 1...2 degrees, in Toktogul and Chatkal regions was below the normal by 1 degree.

Rainfall in the most regions of the country was above the normal by 117-196 %, in Chatkal Valley - 367% of normal, in Jaiyl, Chui, Ysyk-Ata, Alamudun, Alai, Tup, Jeti-Oguz, Ak-Suu, Naryn and Jungal regions and on Chon-Ashuu Pass was close to normal (75-102%), in Leilek, Kara-Suu, Suzak regions and in Kara-Kujur Valley was below the normal by 20-50%.

#### Hydrological conditions in June 2011:

Low water level of rivers as Karakol, Kumush Too, Chychkan, Padysha Ata, Tentek Sai, Yassy, Dongus Too, Kegart and Ak Buura was normal (35-77%). Increased outlet of rivers as Djyrgalan, Chon Kyzyl Suu, Sokuluk, Tar, Kurshab and Kyzyl Suu was normal (127-138%). Water content of other rivers of the republic was within the norm.

Water inflow into the following reservoirs was normal: Orto-Tokoi - 91%, Kirov – 93%, Toktogul – 77%.

Mudflow was noted in Djalal-Abad oblast, Osh oblast and Batken oblast.

#### Condition of Reservoirs as of June 30, 2011

Reservoirs	Changes during a month, mln. m <sup>3</sup>	Volume of water in 2011		Volume of water in 2010	
		mln. m <sup>3</sup>	as a % of volume	mln. m <sup>3</sup>	as a % of volume
Toktogul	+1353	18366	94	16410	85
Orto-Tokoi	-145	280	60	418	89
Kirov	-46	376	68	363	66

**Таблица 2: Средние потребительские цены на продукты питания  
в разрезе регионов во II квартале 2010-2011 гг.**  
(сом/кг)

**Table 2: Average consumer prices for food by regions in II quarter of 2010-2011**  
(soms / kg)

Область /Oblast	II квартал / II quarter		2011		
	2010	2011	апрель/ April	май/ May	июнь/ June
<b>Картофель / Potatoes</b>					
Баткенская/ Batken	16,16	16,08	14,40	11,33	22,50
Джалал-Абадская / Djalal-Abad	15,17	22,03	19,50	20,33	26,25
Иссык-Кульская / Issyk-Kul	10,11	21,66	17,25	17,17	30,56
Нарынская / Naryn	12,93	23,78	17,83	19,33	34,17
Ошская / Osh	16,88	19,75	18,88	16,50	23,88
Таласская / Talas	16,81	22,86	19,02	19,39	30,16
Чуйская / Chui	16,00	24,67	21,33	21,04	31,63
г.Бишкек/ Bishkek city	15,50	26,09	25,46	22,51	30,30
<b>В среднем по республике / Average by the Republic</b>	<b>20,59</b>	<b>24,19</b>	<b>22,70</b>	<b>20,58</b>	<b>28,96</b>
<b>Молоко свежее / Fresh milk</b>					
Баткенская/ Batken	20,00	27,50	30,00	25,00	27,50
Джалал-Абадская / Djalal-Abad	29,38	20,63	20,00	20,00	21,88
Иссык-Кульская / Issyk-Kul	37,97	17,98	20,83	18,11	15,00
Нарынская / Naryn	17,32	19,47	23,50	18,67	16,25
Ошская / Osh	30,46	19,17	22,50	17,50	17,50
Таласская / Talas	17,35	22,45	24,58	21,94	20,83
Чуйская / Chui	18,14	21,46	24,38	20,00	20,00
г.Бишкек/ Bishkek city	29,36	29,26	31,67	29,44	26,67
<b>В среднем по республике / Average by the Republic</b>	<b>28,32</b>	<b>25,90</b>	<b>28,07</b>	<b>25,27</b>	<b>23,88</b>
<b>Мука 1 сорта / Flour, 1st grade</b>					
Баткенская/ Batken	17,04	29,44	30,00	29,33	29,00
Джалал-Абадская / Djalal-Abad	17,70	29,56	29,50	29,67	29,50
Иссык-Кульская / Issyk-Kul	17,02	33,18	32,75	33,44	33,33
Нарынская / Naryn	17,80	32,25	32,25	32,25	32,25
Ошская / Osh	18,17	32,36	32,42	32,33	32,33
Таласская / Talas	13,44	26,46	28,50	27,25	23,63
Чуйская / Chui	21,33	33,04	33,93	33,18	32,00
г.Бишкек/ Bishkek city	18,25	33,79	34,71	33,75	32,92
<b>В среднем по республике / Average by the Republic</b>	<b>18,27</b>	<b>32,95</b>	<b>33,51</b>	<b>32,89</b>	<b>32,29</b>
<b>Рис среднезерный / Medium sized rice</b>					
Баткенская/ Batken	64,17	68,67	68,00	68,00	70,00
Джалал-Абадская / Djalal-Abad	53,88	58,75	56,25	60,00	60,00
Иссык-Кульская / Issyk-Kul	48,55	62,43	62,29	62,50	62,50
Нарынская / Naryn	57,67	58,75	58,75	58,75	58,75
Ошская / Osh	70,00	80,63	80,00	80,00	81,88
Таласская / Talas	56,88	58,33	58,57	58,57	57,86
Чуйская / Chui	52,71	61,58	61,33	61,33	62,08
г.Бишкек/ Bishkek city	55,17	61,06	60,83	60,83	61,50
<b>В среднем по республике / Average by the Republic</b>	<b>57,16</b>	<b>64,00</b>	<b>63,60</b>	<b>63,90</b>	<b>64,63</b>



Таблица 2: (продолжение)

Table 2: (continued)

Область /Oblast	II квартал / II quarter		2011		
	2010	2011	апрель/ April	май/ May	июнь/ June
<b>Сахар-песок / Granulated sugar</b>					
Баткенская/ Batken	48,32	63,06	65,00	61,67	62,50
Джалал-Абадская / Djalal-Abad	52,69	66,08	65,50	65,50	67,25
Иссык-Кульская / Issyk-Kul	49,67	63,38	63,04	64,17	62,92
Нарынская / Naryn	52,13	63,22	62,40	63,87	63,40
Ошская / Osh	51,93	64,26	64,31	64,08	64,38
Таласская / Talas	52,80	64,07	63,83	64,06	64,31
Чуйская / Chui	51,47	65,33	65,50	65,00	65,50
г.Бишкек/ Bishkek city	51,85	65,52	65,63	65,53	65,42
<b>В среднем по республике / Average by the Republic</b>	<b>51,67</b>	<b>65,16</b>	<b>65,20</b>	<b>65,02</b>	<b>65,17</b>
<b>Лук / Onion</b>					
Баткенская/ Batken	12,47	24,59	20,64	27,50	25,63
Джалал-Абадская / Djalal-Abad	13,00	29,11	27,50	34,33	25,50
Иссык-Кульская / Issyk-Kul	16,83	30,50	25,25	37,50	28,75
Нарынская / Naryn	15,97	29,86	25,00	35,83	28,75
Ошская / Osh	12,67	25,28	22,42	27,67	25,75
Таласская / Talas	19,82	30,54	26,88	37,25	27,50
Чуйская / Chui	15,73	30,01	23,48	37,75	28,81
г.Бишкек/ Bishkek city	20,37	30,39	27,85	32,80	30,52
<b>В среднем по республике / Average by the Republic</b>	<b>17,75</b>	<b>29,34</b>	<b>26,23</b>	<b>32,66</b>	<b>29,05</b>
<b>Хлопковое масло / Cotton oil</b>					
Баткенская/ Batken	75,42	101,67	95,00	100,00	110,00
Джалал-Абадская / Djalal-Abad	76,96	108,24	101,18	111,76	111,76
Иссык-Кульская / Issyk-Kul	79,39	111,30	111,30	111,30	111,30
Нарынская / Naryn	66,67	100,93	102,78	100,00	100,00
Ошская / Osh	81,81	116,67	116,18	116,48	117,36
Таласская / Talas	66,27	95,62	92,59	96,22	98,04
Чуйская / Chui	73,75	109,20	109,20	109,20	109,20
г.Бишкек/ Bishkek city	75,30	110,25	110,64	110,64	109,47
<b>В среднем по республике / Average by the Republic</b>	<b>76,21</b>	<b>110,45</b>	<b>109,66</b>	<b>110,74</b>	<b>110,63</b>
<b>Баранина / Mutton</b>					
Баткенская/ Batken	185,67	273,33	260,00	280,00	280,00
Джалал-Абадская / Djalal-Abad	180,00	276,67	270,00	270,00	290,00
Иссык-Кульская / Issyk-Kul	177,25	262,67	246,88	262,08	279,06
Нарынская / Naryn	190,33	290,56	267,50	304,67	299,50
Ошская / Osh	186,33	274,38	265,00	270,00	288,13
Таласская / Talas	190,17	268,75	251,25	275,00	280,00
Чуйская / Chui	182,08	253,19	236,25	258,33	265,00
г.Бишкек/ Bishkek city	198,53	279,79	272,90	276,33	290,15
<b>В среднем по республике / Average by the Republic</b>	<b>192,30</b>	<b>275,93</b>	<b>266,62</b>	<b>273,42</b>	<b>287,21</b>

Таблица 2: (продолжение)

Table 2: (continued)

Область /Oblast	II квартал / II quarter		2011		
	2010	2011	апрель/ April	май/ May	июнь/ June
	<b>Говядина / Beef</b>				
Баткенская/ Batken	172,00	246,67	240,00	250,00	250,00
Джалал-Абадская / Djalal-Abad	170,00	253,06	240,00	246,67	272,50
Иссык-Кульская / Issyk-Kul	175,79	267,12	251,56	266,67	283,13
Нарынская / Naryn	192,25	289,17	267,50	300,00	300,00
Ошская / Osh	167,67	248,13	235,00	240,00	269,38
Таласская / Talas	185,96	277,50	270,00	275,00	287,50
Чуйская / Chui	196,96	275,81	272,29	271,39	283,75
г.Бишкек/ Bishkek city	194,14	271,97	268,58	271,61	275,71
<b>В среднем по республике / Average by the Republic</b>	<b>186,76</b>	<b>266,61</b>	<b>259,80</b>	<b>264,39</b>	<b>274,97</b>
	<b>Конина / Horsemeat</b>				
Баткенская/ Batken	-	-	-	-	-
Джалал-Абадская / Djalal-Abad	145,00	237,78	240,00	233,33	240,00
Иссык-Кульская / Issyk-Kul	171,25	236,25	236,25	-	-
Нарынская / Naryn	192,71	283,75	267,50	300,00	-
Ошская / Osh	150,00	170,00	170,00	170,00	170,00
Таласская / Talas	218,33	299,44	287,50	293,33	317,50
Чуйская / Chui	203,33	258,33	255,00	260,00	260,00
г.Бишкек/ Bishkek city	191,25	286,67	280,00	290,00	290,00
<b>В среднем по республике / Average by the Republic</b>	<b>181,55</b>	<b>261,36</b>	<b>255,76</b>	<b>263,56</b>	<b>264,96</b>
	<b>Свинина / Pork</b>				
Баткенская/ Batken	-	-	-	-	-
Джалал-Абадская / Djalal-Abad	180,00	-	-	-	-
Иссык-Кульская / Issyk-Kul	172,83	167,50	162,50	170,00	170,00
Нарынская / Naryn	-	-	-	-	-
Ошская / Osh	190,00	200,00	200,00	200,00	200,00
Таласская / Talas	195,83	191,67	200,00	190,00	185,00
Чуйская / Chui	185,00	186,67	187,50	187,50	185,00
г.Бишкек/ Bishkek city	231,00	225,00	225,00	225,00	225,00
<b>В среднем по республике / Average by the Republic</b>	<b>213,35</b>	<b>214,69</b>	<b>213,82</b>	<b>214,07</b>	<b>214,58</b>
	<b>Куры / Chicken</b>				
Баткенская/ Batken	95,00	166,67	150,00	150,00	200,00
Джалал-Абадская / Djalal-Abad	152,14	264,17	270,00	250,00	272,50
Иссык-Кульская / Issyk-Kul	136,41	211,11	233,33	200,00	200,00
Нарынская / Naryn	0,00	170,37	166,67	177,78	166,67
Ошская / Osh	174,61	240,00	240,00	240,00	240,00
Таласская / Talas	187,50	190,55	205,00	193,64	173,03
Чуйская / Chui	213,24	169,58	170,63	170,00	168,13
г.Бишкек/ Bishkek city	152,53	236,94	230,00	238,33	242,50
<b>В среднем по республике / Average by the Republic</b>	<b>158,01</b>	<b>229,83</b>	<b>225,67</b>	<b>227,45</b>	<b>234,19</b>
	<b>Яйца / Eggs (10 pieces)</b>				
Баткенская/ Batken	60,00	81,88	85,63	80,00	80,00
Джалал-Абадская / Djalal-Abad	58,01	70,00	70,00	70,00	70,00
Иссык-Кульская / Issyk-Kul	45,95	55,89	57,25	54,67	55,75
Нарынская / Naryn	59,79	65,87	67,19	65,42	65,00
Ошская / Osh	58,00	66,67	66,67	66,67	66,67
Таласская / Talas	59,11	70,03	71,25	69,79	69,06
Чуйская / Chui	51,04	64,65	68,13	63,33	62,50
г.Бишкек/ Bishkek city	57,25	61,25	63,40	61,40	58,95
<b>В среднем по республике / Average by the Republic</b>	<b>56,59</b>	<b>63,55</b>	<b>65,53</b>	<b>63,60</b>	<b>61,89</b>

**Продовольственный баланс**  
по базовым продуктам питания

**Таблица 3.**

**Table 3.**

**Food balance <sup>1</sup>**  
by basic foodstuffs

Базовые продукты питания / Basic foodstuffs	Хлебопродукты/ Bread and bread products			Пшеница и продукты ее переработки/Wheat and wheat processed products			Картофель / Potatoes			Овощи и бахчевые / Vegetables and melons			Фрукты и ягоды / Fruits and berries		
	в пересчете на зерно, тыс. тонн /expressed in grain, thsd. tons			в пересчете на зерно, тыс. тонн /expressed in grain, thsd. tons			свежий, тыс. тонн / fresh, thsd. tons			свежий, тыс. тонн / fresh, thsd. tons			свежий, тыс. тонн / fresh, thsd. tons		
	2010	I пол. 2010 / 1st half of 2010	I пол. 2011 <sup>1</sup> / 1st half of 2011 <sup>1</sup>	2010	I пол. 2010 / 1st half of 2010	I пол. 2011 <sup>1</sup> / 1st half of 2011 <sup>1</sup>	2010	I пол. 2010 / 1st half of 2010	I пол. 2011 <sup>1</sup> / 1st half of 2011 <sup>1</sup>	2010	I пол. 2010 / 1st half of 2010	I пол. 2011 <sup>1</sup> / 1st half of 2011 <sup>1</sup>	2010	I пол. 2010 / 1st half of 2010	I пол. 2011 <sup>1</sup> / 1st half of 2011 <sup>1</sup>
1. Запасы на начало года / Opening stocks	1654,2	1654,2	1453,8	884,1	884,1	827,2	712,2	712,2	712,2	293,1	293,1	236,9	18,3	18,3	9,4
2. Произведено продовольствия в стране (+) / Food production in the country	1583,8	11,3	14,6	813,3	9,5	11,1	1339,4	19,0	22,4	969,3	28,0	31,9	193,1	3,7	4,1
3. Импортировано прод. товаров (+) / Food imports	436,0	194,6	211,7	399,8	186,0	176,7	0,7	0,7	0,4	8,9	2,8	3,5	58,0	35,2	25,4
<b>Поступление (1-3) (+) Availability</b>	3674,0	1860,1	1680,1	2097,2	1079,6	1015,0	2052,3	731,9	735,0	1271,3	323,9	272,3	269,4	57,2	38,9
4. Расходы на семена (-) / Expenses for seeds	137,0	72,4	76,1	91,8	28,6	31,1	316,0	295,1	297,1	0,0	0,0	0,0	-	-	-
5. На корм скоту (-) / Fodder	949,9	480,0	454,3	264,4	90,6	132,0	191,1	75,6	96,4	56,3	25,5	23,3	7,9	1,4	1,9
6. Потери (-) / Losses	63,6	32,2	29,1	20,1	9,6	9,6	61,8	22,1	22,1	16,3	3,9	3,5	11,3	0,8	1,6
7. Экспортировано прод. товаров (-) / Food exports	78,0 <sup>2</sup>	30,5	43,3	15,5 <sup>2</sup>	1,3	0,6	266,4 <sup>2</sup>	7,7	55,6	182,9 <sup>2</sup>	69,6	97,2	85,0 <sup>2</sup>	22,7	18,0
8. Наличие для потребления населением (-) / Availability for consumption by the population	991,7	494,1	499,4	878,2	416,8	446,5	504,8	258,4	253,9	778,9	196,2	138,3	155,8	14,4	14,7
<b>Использование Consumption</b>	2220,2	1109,2	1102,2	1270,0	546,9	619,8	1340,1	658,9	725,1	1034,4	295,2	262,3	260,0	39,3	36,2
10. Запасы на конец периода / Closing stocks	1453,8	750,9	577,9	827,2	532,7	395,2	712,2	73,0	9,9	236,9	28,7	10,0	9,4	17,9	2,7

<sup>1</sup> Предварительные данные/Preliminary data

<sup>2</sup> С учетом неучтенного экспорта/Including unaccounted export

Таблица 3.(продолжение)

Table 3. (continued)

Базовые продукты питания / Basic foodstuffs	Мясо и мясные продукты / Meat and meat products			Молоко и молочные продукты / Milk and dairy products			Яйца / Eggs			Жиры растительные / Vegetable oil			Сахар и кондитерские изделия / Sugar and confectioneries		
	в пересчете на убойный вес, тыс. тонн / expressed in slaughter weight, thsd. tons			в пересчете на молоко, тыс. тонн / expressed in milk, thsd. tons			миллионов штук / millions pieces			тыс. тонн / thsd. tons			в пересчете на сахар, тыс. тонн / expressed in sugar, thsd. Tons		
	2010	I пол. 2010 / 1st half of 2010	I пол. 2011 <sup>1</sup> / 1st half of 2011 <sup>1</sup>	2010	I пол. 2010 / 1st half of 2010	I пол. 2011 <sup>1</sup> / 1st half of 2011 <sup>1</sup>	2010	I пол. 2010 / 1st half of 2010	I пол. 2011 <sup>1</sup> / 1st half of 2011 <sup>1</sup>	2010	I пол. 2010 / 1st half of 2010	I пол. 2011 <sup>1</sup> / 1st half of 2011 <sup>1</sup>	2010	I пол. 2010 / 1st half of 2010	I пол. 2011 <sup>1</sup> / 1st half of 2011 <sup>1</sup>
1. Запасы на начало года / Opening stocks	4,5	4,5	4,6	38,5	38,5	38,6	15,2	15,2	25,4	40,3	40,3	36,0	46,7	46,7	15,9
2. Произведено продовольствия в стране (+) / Food production in the country	187,8	88,1	89,0	1359,9	628,4	627,5	373,1	191,4	201,8	18,1	9,5	8,1	14,0	0,0	0,0
3. Импортировано прод. товаров (+) / Food imports	99,8	43,6	47,8	34,4	16,5	8,5	56,7	15,0	23,9	40,0	18,0	15,6	67,2	27,7	40,4
<b>Поступление (1-3) (+) Availability</b>	292,1	136,2	141,4	1432,8	683,4	674,6	445,0	221,6	251,1	98,4	67,8	59,7	127,9	74,4	56,3
4. Расходы на семена (-) / Expenses for seeds	-	-	-	-	-	-	6,3	4,2	4,4	-	-	-	-	-	-
5. На корм скоту (-) / Fodder	0,0	0,0	0,0	132,2	91,5	91,1	1,0	0,7	0,7	-	-	-	-	-	-
6. Потери (-) / Losses	0,3	0,0	0,1	1,7	0,7	0,8	0,0	0,0	0,0	0,0	0,0	0,0	0,1	0,0	0,0
7. Экспортировано прод. товаров (-) / Food exports	86,2 <sup>2</sup>	0,2	0,4	157,2 <sup>2</sup>	33,7	24,5	-	0,0	0,0	0,0	0,0	0,0	1,3	0,3	0,4
8. Наличие для потребления населением (-) / Availability for consumption by the population	201,0	101,2	102,5	1103,1	511,6	518,0	412,3	173,7	185,7	62,4	30,0	31,4	110,6	51,5	53,1
<b>Использование Consumption</b>	287,5	101,4	103,0	1394,2	637,5	634,4	419,6	178,6	190,8	62,4	30,0	31,4	112,0	51,8	53,5
10. Запасы на конец периода / Closing stocks	4,6	34,8	38,4	38,6	45,9	40,2	25,4	43,0	60,3	36,0	37,8	28,3	15,9	22,6	2,8

<sup>1</sup> Предварительные данные/Preliminary data<sup>2</sup> С учетом неучтенного экспорта/Including unaccounted export

**Таблица 4: Баланс питания в виде энергетической ценности по результатам обследований  
ежедневного потребления и оценки ежедневных потребностей**  
(все население по демографическим группам и регионам)

**Table 4: Food Balance expressed in nutritional values and compared to calculated daily needs based on surveys of daily intake  
and on calculated daily needs based on recurrent nutritional surveillance**  
(total population by demographic groups and by regions)

Область/Oblast	Население, человек		Ккал в день на душу населения		Белки в день на душу населения, грамм		Жиры в день на душу населения, грамм		
	Number, people		k/Calories C/d/p		Proteins g/d/p		Fats g/d/p		
	2009	2010	2009	2010	2009	2010	2009	2010	
<b>Все население</b>	<b>5 418 299</b>	<b>5 477 620</b>							<b>Total population</b>
Баткенская область	433 802	441 101	2 215	2 327	55,5	58,2	64,3	67,9	Batken oblast
Джалал-Абадская область	1 023 132	1 036 644	2 375	2 226	62,1	59,2	58,5	54,1	Djalal-Abad oblast
Иссык-Кульская область	441 323	444 520	2 239	2 319	57,9	59,9	55,8	64,3	Issyk-Kul oblast
Нарынская область	259 378	262 137	2 279	2 052	64,0	57,9	55,1	51,0	Naryn oblast
Ошская область	1 376 957	1 386 734	2 237	2 211	56,9	57,4	58,9	59,0	Osh oblast
Таласская область	228 995	231 819	2 461	2 489	63,6	64,3	65,4	64,0	Talas oblast
Чуйская область	808 245	814 870	2 500	2 607	66,3	69,0	73,5	76,7	Chui oblast
г.Бишкек	846 467	859 795	2 532	2 363	69,8	65,3	71,8	65,6	Bishkek city
Суточное потребление			2 358	2 319	61,9	61,3	63,3	62,7	Daily intake
Суточные потребности			2 101	2 101	73,0	73,0	71,0	71,0	Daily needs
Баланс: (+) или (-)			257	218	-11	-12	-8	-8	Balance: (+) or (-)

**Таблица 4: (продолжение)**  
**Table 4: (continued)**

Область/Oblast	Население, человек		Ккал в день на душу населения		Белки в день на душу населения, грамм		Жиры в день на душу населения, грамм		
	Number, people		k/Calories C/d/p		Proteins g/d/p		Fats g/d/p		
	2009	2010	2009	2010	2009	2010	2009	2010	
<b>Население пенсионного возраста</b>	<b>560 490</b>	<b>584 763</b>							<b>Pensioners</b>
Баткенская область	36 405	41 892	2 544	2 680	65,5	67,3	76,8	81,4	Batken oblast
Джалал-Абадская область	105 159	103 526	2 467	2 369	65,3	64,0	62,2	60,1	Djalal-Abad oblast
Иссык-Кульская область	51 557	53 395	2 609	2 812	67,4	73,7	69,1	81,1	Issyk-Kul oblast
Нарынская область	26 043	26 858	2 569	2 074	76,5	60,2	63,3	54,4	Naryn oblast
Ошская область	112 961	119 818	2 632	2 512	67,2	65,7	72,5	70,1	Osh oblast
Таласская область	18 588	21 202	2 713	2 806	71,2	73,5	74,5	75,8	Talas oblast
Чуйская область	108 120	109 479	2 953	3 028	81,9	83,9	94,5	95,0	Chui oblast
г.Бишкек	101 657	108 593	2 743	2 828	78,9	81,5	82,6	84,8	Bishkek city
Суточное потребление			2 675	2 672	72,3	72,6	76,2	77,0	Daily intake
Суточные потребности			2 100	2 100	71,0	71,0	72,0	72,0	Daily needs
Баланс: (+) или (-)			575	572	1	2	4	5	Balance: (+) or (-)

**Таблица 4: (продолжение)**  
**Table 4: (continued)**

Область/Oblast	Население, человек		Ккал в день на душу населения		Белки в день на душу населения, грамм		Жиры в день на душу населения, грамм		
	Number, people		k/Calories C/d/p		Proteins g/d/p		Fats g/d/p		
	2009	2010	2009	2010	2009	2010	2009	2010	
<b>Население трудоспособного возраста</b>	<b>2 744 818</b>	<b>2 771 795</b>							<b>Working age population</b>
Баткенская область	207 308	221 179	2 473	2 570	61,9	64,8	72,0	74,9	Batken oblast
Джалал-Абадская область	501 388	512 331	2 614	2 470	68,2	65,5	65,0	60,1	Djalal-Abad oblast
Иссык-Кульская область	229 128	223 896	2 503	2 558	64,8	66,3	62,5	70,7	Issyk-Kul oblast
Нарынская область	122 919	120 064	2 529	2 329	70,5	66,0	61,3	57,9	Naryn oblast
Ошская область	653 061	652 721	2 447	2 463	62,1	64,0	64,6	65,6	Osh oblast
Таласская область	107 965	110 328	2 858	2 863	74,0	73,9	75,8	73,5	Talas oblast
Чуйская область	437 529	449 676	2 725	2 832	72,1	74,8	79,5	83,2	Chui oblast
г.Бишкек	485 519	481 599	2 732	2 537	75,2	70,0	77,5	70,3	Bishkek city
Суточное потребление			2 599	2 563	68,2	67,8	70,0	69,4	Daily intake
Суточные потребности			2 212	2 212	76,0	76,0	74,0	74,0	Daily needs
Баланс: (+) или (-)			387	351	-8	-8	-4	-5	Balance: (+) or (-)

**Таблица 4: (продолжение)**  
**Table 4: (continued)**

Область/Oblast	Население, человек		Ккал в день на душу населения		Белки в день на душу населения, грамм		Жиры в день на душу населения, грамм		
	Number, people		k/Calories C/d/p		Proteins g/d/p		Fats g/d/p		
	2009	2010	2009	2010	2009	2010	2009	2010	
<b>Дети 1-17</b>	<b>2 013 906</b>	<b>2 001 030</b>							<b>Children aged 1-17 years</b>
Баткенская область	175 479	165 577	2 028	2 087	50,6	51,5	58,0	60,3	Batken oblast
Джалал-Абадская область	397 298	401 556	2 165	1 984	56,7	52,9	52,3	47,4	Djalal-Abad oblast
Иссык-Кульская область	148 505	160 820	1 887	1 915	48,7	48,7	45,5	52,5	Issyk-Kul oblast
Нарынская область	105 906	105 334	2 014	1 922	56,2	53,6	48,2	47,0	Naryn oblast
Ошская область	588 078	571 325	2 014	2 025	51,4	52,4	52,2	53,6	Osh oblast
Таласская область	96 582	94 485	2 117	2 134	54,4	55,1	56,0	54,3	Talas oblast
Чуйская область	253 657	248 100	2 006	2 093	52,0	53,9	56,8	59,0	Chui oblast
г.Бишкек	248 400	253 834	2 166	1 979	58,4	53,6	59,4	52,6	Bishkek city
Суточное потребление			2 058	2 016	53,5	52,6	53,7	53,0	Daily intake
Суточные потребности			1 920	1 920	69,0	69,0	66,0	66,0	Daily needs
Баланс: (+) или (-)			138	96	-16	-16	-12	-13	Balance: (+) or (-)



**Таблица 4: (продолжение)**  
**Table 4: (continued)**

Область/Oblast	Население, человек		Ккал в день на душу населения		Белки в день на душу населения, грамм		Жиры в день на душу населения, грамм		
	Number, people		k/Calories C/d/p		Proteins g/d/p		Fats g/d/p		
	2009	2010	2009	2010	2009	2010	2009	2010	
<b>Дети 1-3 лет</b>	<b>299 582</b>	<b>325 075</b>							<b>Children aged 1-3 years</b>
Баткенская область	25 307	29 564	1 321	1 414	34,0	36,5	38,2	40,7	Batken oblast
Джалал-Абадская область	48 437	63 842	1 391	1 340	35,6	35,5	33,4	31,6	Djalal-Abad oblast
Иссык-Кульская область	28 940	34 450	1 276	1 277	33,3	32,7	30,7	34,4	Issyk-Kul oblast
Нарынская область	20 929	15 610	1 633	1 305	45,6	38,2	37,6	32,8	Naryn oblast
Ошская область	70 388	84 275	1 337	1 297	33,7	33,9	34,5	33,8	Osh oblast
Таласская область	17 466	15 217	1 458	1 460	37,7	37,5	40,4	37,7	Talas oblast
Чуйская область	51 578	44 876	1 399	1 473	36,1	38,6	39,4	41,3	Chui oblast
г.Бишкек	36 537	37 242	1 549	1 379	42,8	37,9	42,2	37,9	Bishkek city
Суточное потребление			1 403	1 356	36,6	35,8	36,6	35,7	Daily intake
Суточные потребности			1 661	1 661	62,0	62,0	59,0	59,0	Daily needs
Баланс: (+) или (-)			-258	-305	-25	-26	-22	-23	Balance: (+) or (-)

**Таблица 4: (продолжение)**  
**Table 4: (continued)**

Область/Oblast	Население, человек		Ккал в день на душу населения		Белки в день на душу населения, грамм		Жиры в день на душу населения, грамм		
	Number, people		k/Calories C/d/p		Proteins g/d/p		Fats g/d/p		
	2009	2010	2009	2010	2009	2010	2009	2010	
<b>Дети 4-6 лет</b>	<b>330 860</b>	<b>287 756</b>							<b>Children aged 4-6 years</b>
Баткенская область	26 968	23 190	1 688	1 728	42,0	43,5	49,0	48,8	Batken oblast
Джалал-Абадская область	59 945	51 968	1 750	1 774	46,2	47,5	43,6	43,5	Djalal-Abad oblast
Иссык-Кульская область	21 675	22 283	1 749	1 621	44,9	40,7	40,4	45,7	Issyk-Kul oblast
Нарынская область	19 785	16 950	1 616	1 618	44,6	44,1	37,9	39,5	Naryn oblast
Ошская область	92 967	74 898	1 700	1 642	43,5	42,4	43,8	42,5	Osh oblast
Таласская область	17 288	16 322	1 845	1 851	46,7	47,9	47,2	47,3	Talas oblast
Чуйская область	42 635	36 608	1 733	1 798	45,3	47,0	49,6	50,8	Chui oblast
г.Бишкек	49 598	45 537	1 810	1 684	49,1	46,0	49,6	45,3	Bishkek city
Суточное потребление			1 735	1 708	45,2	44,9	45,4	45,0	Daily intake
Суточные потребности			1 661	1 661	62,0	62,0	59,0	59,0	Daily needs
Баланс: (+) или (-)			74	47	-17	-17	-14	-14	Balance: (+) or (-)

**Таблица 4: (продолжение)**  
**Table 4: (continued)**

Область/Oblast	Население, человек		Ккал в день на душу населения		Белки в день на душу населения, грамм		Жиры в день на душу населения, грамм		
	Number, people		k/Calories C/d/p		Proteins g/d/p		Fats g/d/p		
	2009	2010	2009	2010	2009	2010	2009	2010	
<b>Дети 7-13 лет</b>	<b>816 427</b>	<b>827 549</b>							<b>Children aged 7-13 years</b>
Баткенская область	75 722	70 994	2 133	2 266	52,4	55,4	60,6	65,6	Batken oblast
Джалал-Абадская область	170 285	174 106	2 244	2 081	58,8	55,3	53,5	49,3	Djalal-Abad oblast
Иссык-Кульская область	61 220	59 932	2 042	2 099	52,2	53,5	49,4	56,3	Issyk-Kul oblast
Нарынская область	38 788	44 006	2 171	2 041	60,9	57,2	52,2	49,7	Naryn oblast
Ошская область	250 052	247 281	2 092	2 136	53,5	55,1	54,3	56,7	Osh oblast
Таласская область	36 840	36 209	2 262	2 250	58,4	58,2	60,6	56,4	Talas oblast
Чуйская область	84 213	95 404	2 142	2 185	55,8	56,5	60,9	62,1	Chui oblast
г.Бишкек	99 307	99 616	2 318	2 041	62,7	55,4	64,2	54,4	Bishkek city
Суточное потребление			2 168	2 127	56,3	55,5	56,4	55,8	Daily intake
Суточные потребности			2 031	2 031	73,0	73,0	70,0	70,0	Daily needs
Баланс: (+) или (-)			137	96	-17	-17	-14	-14	Balance: (+) or (-)

**Таблица 4: (продолжение)**  
**Table 4: (continued)**

Область/Oblast	Население, человек		Ккал в день на душу населения		Белки в день на душу населения, грамм		Жиры в день на душу населения, грамм		
	Number, people		k/Calories C/d/p		Proteins g/d/p		Fats g/d/p		
	2009	2010	2009	2010	2009	2010	2009	2010	
<b>Дети 14-17 лет</b>	<b>567 036</b>	<b>560 651</b>							<b>Children aged 14-17 years</b>
Баткенская область	47 483	41 828	2 430	2 457	61,3	59,8	69,6	71,7	Batken oblast
Джалал-Абадская область	118 632	111 640	2 577	2 299	67,5	61,4	62,8	55,3	Djalal-Abad oblast
Иссык-Кульская область	36 669	44 155	2 194	2 312	57,1	58,5	53,6	65,0	Issyk-Kul oblast
Нарынская область	26 405	28 768	2 386	2 256	66,4	62,2	58,6	55,2	Naryn oblast
Ошская область	174 672	164 871	2 342	2 406	59,6	62,3	60,9	64,1	Osh oblast
Таласская область	24 988	26 737	2 553	2 531	65,6	65,3	66,3	65,0	Talas oblast
Чуйская область	75 230	71 213	2 426	2 511	62,5	63,6	68,4	70,5	Chui oblast
г.Бишкек	62 957	71 439	2 563	2 393	67,8	64,3	69,2	62,2	Bishkek city
Суточное потребление			2436	2 391	63,1	62,2	63,6	63,1	Daily intake
Суточные потребности			2 244	2 244	78,0	78,0	74,0	74,0	Daily needs
Баланс: (+) или (-)			192	147	-15	-16	-10	-11	Balance: (+) or (-)

**Таблица 5: Баланс питания в виде энергетической ценности по результатам обследований  
ежедневного потребления и оценки ежедневных потребностей**  
(все население по квинтильным группам и регионам)

**Table 5: Food Balance expressed in nutritional values and compared to calculated daily needs, based on surveys of daily intake  
and on calculated daily needs based on recurrent nutritional surveillance**  
(total population by quintile groups and by regions)

Область/Oblast	Население, человек		Ккал в день на душу населения		Белки в день на душу населения, грамм		Жиры в день на душу населения, грамм		
	Number, people		k/Calories C/d/p		Proteins g/d/p		Fats g/d/p		
	2009	2010	2009	2010	2009	2010	2009	2010	
<b>Первая квинтиль</b>	<b>1 084 595</b>	<b>1 063 591</b>							<b>First quintile</b>
Баткенская область	115 795	130 402	1 986	1 983	49,1	48,8	55,3	54,5	Batken oblast
Джалал-Абадская область	338 195	341 609	2 095	1 944	56,2	52,5	53,1	46,9	Djalal-Abad oblast
Иссык-Кульская область	157 119	112 137	1 865	1 834	47,3	45,7	43,2	49,1	Issyk-Kul oblast
Нарынская область	114 855	111 072	2 092	1 890	59,7	51,6	48,3	44,7	Naryn oblast
Ошская область	168 012	204 554	1 793	1 659	44,6	44,6	42,7	39,2	Osh oblast
Таласская область	90 870	78 690	1 918	1 988	48,0	50,4	49,3	49,1	Talas oblast
Чуйская область	84 792	76 481	1 945	1 795	49,0	45,6	47,9	46,9	Chui oblast
г.Бишкек	14 956	8 647	1 441	1 394	37,8	38,7	34,9	30,1	Bishkek city
Суточное потребление			1 967	1 865	51,2	49,0	48,8	46,4	Daily intake
Суточные потребности			2 101	2 101	73,0	73,0	71,0	71,0	Daily needs
Баланс: (+) или (-)			-134	-236	-22	-24	-22	-25	Balance: (+) or (-)

Таблица 5: (продолжение)  
Table 5: (continued)

Область/Oblast	Население, человек		Ккал в день на душу населения		Белки в день на душу населения, грамм		Жиры в день на душу населения, грамм		
	Number, people		k/Calories C/d/p		Proteins g/d/p		Fats g/d/p		
	2009	2010	2009	2010	2009	2010	2009	2010	
<b>Вторая квинтиль</b>	<b>1 083 113</b>	<b>1 051 579</b>							<b>Second quintile</b>
Баткенская область	114 626	102 994	2 124	2 295	51,3	57,1	62,4	66,1	Batken oblast
Джалал-Абадская область	293 637	275 953	2 207	2 175	56,9	58,0	52,4	51,1	Djalal-Abad oblast
Иссык-Кульская область	115 770	96 582	2 054	2 048	52,2	52,1	48,8	52,8	Issyk-Kul oblast
Нарынская область	48 963	50 650	2 235	1 963	63,7	56,1	54,0	49,2	Naryn oblast
Ошская область	311 754	284 843	1 966	2 031	49,7	53,0	51,7	52,4	Osh oblast
Таласская область	58 823	63 221	2 338	2 299	61,0	59,3	59,5	58,1	Talas oblast
Чуйская область	101 325	133 311	2 106	2 243	53,0	57,2	55,6	61,4	Chui oblast
г.Бишкек	38 214	44 025	1 666	1 745	46,0	46,8	40,3	43,4	Bishkek city
Суточное потребление			2 092	2 124	53,5	55,4	53,2	54,4	Daily intake
Суточные потребности			2 101	2 101	73,0	73,0	71,0	71,0	Daily needs
Баланс: (+) или (-)			-9	23	-19	-18	-18	-17	Balance: (+) or (-)

Таблица 5: (продолжение)  
Table 5: (continued)

Область/Oblast	Население, человек		Ккал в день на душу населения		Белки в день на душу населения, грамм		Жиры в день на душу населения, грамм		
	Number, people		k/Calories C/d/p		Proteins g/d/p		Fats g/d/p		
	2009	2010	2009	2010	2009	2010	2009	2010	
<b>Третья квинтиль</b>	<b>1 084 616</b>	<b>1 149 745</b>							<b>Third quintile</b>
Баткенская область	97 938	86 100	2 231	2 307	55,9	57,3	63,9	69,0	Batken oblast
Джалал-Абадская область	185 686	220 206	2 528	2 289	65,2	60,2	61,2	54,9	Djalal-Abad oblast
Иссык-Кульская область	67 294	115 876	2 331	2 386	61,4	62,0	59,6	68,3	Issyk-Kul oblast
Нарынская область	36 756	36 485	2 100	2 210	58,9	64,0	54,4	52,8	Naryn oblast
Ошская область	331 345	363 136	2 086	2 167	53,9	55,9	51,0	58,0	Osh oblast
Таласская область	40 098	47 936	2 784	2 805	74,1	72,6	72,9	71,2	Talas oblast
Чуйская область	197 404	128 001	2 315	2 383	59,9	62,7	64,9	67,8	Chui oblast
г.Бишкек	128 096	152 005	2 060	1 923	55,3	52,5	53,2	47,7	Bishkek city
Суточное потребление			2 255	2 243	58,7	58,7	58,2	59,4	Daily intake
Суточные потребности			2 101	2 101	73,0	73,0	71,0	71,0	Daily needs
Баланс: (+) или (-)			154	142	-14	-14	-13	-12	Balance: (+) or (-)

Таблица 5: (продолжение)  
Table 5: (continued)

Область/Oblast	Население, человек		Ккал в день на душу населения		Белки в день на душу населения, грамм		Жиры в день на душу населения, грамм		
	Number, people		k/Calories C/d/p		Proteins g/d/p		Fats g/d/p		
	2009	2010	2009	2010	2009	2010	2009	2010	
<b>Четвертая квинтиль</b>	<b>1 082 555</b>	<b>1 084 443</b>							<b>Fourth quintile</b>
Баткенская область	61 820	56 346	2 546	2 519	66,4	65,2	76,6	77,7	Batken oblast
Джалал-Абадская область	123 821	123 021	2 714	2 696	71,0	70,9	65,1	68,4	Djalal-Abad oblast
Иссык-Кульская область	59 856	60 665	2 682	2 641	71,6	67,8	70,1	73,8	Issyk-Kul oblast
Нарынская область	30 815	36 174	2 458	2 250	67,0	65,3	66,0	60,0	Naryn oblast
Ошская область	269 487	279 318	2 336	2 343	58,2	60,0	62,7	63,9	Osh oblast
Таласская область	24 558	24 774	3 184	2 919	80,7	76,2	91,4	77,9	Talas oblast
Чуйская область	211 595	254 666	2 381	2 634	63,4	69,2	69,0	75,5	Chui oblast
г.Бишкек	300 602	249 478	2 318	2 226	63,5	60,5	63,7	58,8	Bishkek city
Суточное потребление			2 437	2 460	64,2	64,8	66,4	67,4	Daily intake
Суточные потребности			2 101	2 101	73,0	73,0	71,0	71,0	Daily needs
Баланс: (+) или (-)			336	359	-9	-8	-5	-4	Balance: (+) or (-)



Таблица 5: (продолжение)  
Table 5: (continued)

Область/Oblast	Население, человек		Ккал в день на душу населения		Белки в день на душу населения, грамм		Жиры в день на душу населения, грамм		
	Number, people		k/Calories C/d/p		Proteins g/d/p		Fats g/d/p		
	2009	2010	2009	2010	2009	2010	2009	2010	
<b>Пятая квинтиль</b>	<b>1 083 420</b>	<b>1 128 262</b>							<b>Fifth quintile</b>
Баткенская область	43 623	65 258	2 560	2 923	67,4	73,7	76,8	87,6	Batken oblast
Джалал-Абадская область	81 793	75 855	3 277	2 733	85,1	72,4	87,2	71,8	Djalal-Abad oblast
Иссык-Кульская область	41 283	59 260	3 390	3 218	88,7	86,8	96,4	94,5	Issyk-Kul oblast
Нарынская область	27 990	27 757	3 162	2 395	85,9	69,0	73,7	65,3	Naryn oblast
Ошская область	296 358	254 883	2 851	2 773	73,6	71,7	81,0	78,4	Osh oblast
Таласская область	14 646	17 197	4 222	3 979	113,7	106,3	125,7	114,4	Talas oblast
Чуйская область	213 129	222 411	3 195	3 201	88,3	87,5	104,8	102,5	Chui oblast
г.Бишкек	364 598	405 641	3 010	2 699	83,8	75,7	89,9	79,6	Bishkek city
Суточное потребление			3 040	2 869	82,0	77,7	90,0	84,8	Daily intake
Суточные потребности			2 101	2 101	73,0	73,0	71,0	71,0	Daily needs
Баланс: (+) или (-)			939	768	9	5	19	14	Balance: (+) or (-)

**Таблица 6: Продовольственный баланс домохозяйств в стоимостном выражении по результатам обследований уровня жизни**

*(все население по доходным квинтильным группам и регионам, сомов)*

**Table 6: Household Food Balance expressed in value terms based on results of surveys of living standard**

*(total population by income quintile groups and by regions, som)*

	Население, человек		Среднедушевые доходы, сом/чел/месяц		Среднедушевые расходы на питание, сом/чел/месяц		Баланс, %		
	Number, people		Average per capita available income, s/ps/month		Average per capita food expenditure, s/ps/month		Balance, %		
	2009	2010	2009	2010	2009	2010	2009	2010	
<b>Все население</b>	<b>5 418 299</b>	<b>5 477 620</b>							<b>Total population</b>
Баткенская область	433 802	441 101	2 143	2 405	756	836	35,3	34,7	Batken oblast
Джалал-Абадская область	1 023 132	1 036 644	2 116	2 315	903	834	42,7	36,0	Djalal-Abad oblast
Иссык-Кульская область	441 323	444 520	1 761	2 566	877	1 002	49,8	39,1	Issyk-Kul oblast
Нарынская область	259 378	262 137	1 748	1 988	596	585	34,1	29,4	Naryn oblast
Ошская область	1 376 957	1 386 734	2 371	2 296	1 174	1 141	49,5	49,7	Osh oblast
Таласская область	228 995	231 819	1 763	2 099	806	785	45,7	37,4	Talas oblast
Чуйская область	808 245	814 870	2 583	2 787	1 179	1 325	45,6	47,6	Chui oblast
г.Бишкек	846 467	859 795	2 889	3 025	1 636	1 605	56,6	53,1	Bishkek city
Средневзвешенный баланс			2 312	2 494	1 095	1 106	47,4	44,3	Average weighted balance

Таблица 6: (продолжение)  
Table 6: (continued)

	Население, человек		Среднедушевые доходы, сом/чел/месяц		Среднедушевые расходы на питание, сом/чел/месяц		Баланс, %		
	Number, people		Average per capita available income, s/ps/month		Average per capita food expenditure, s/ps/month		Balance, %		
	2009	2010	2009	2010	2009	2010	2009	2010	
<b>Первая квинтиль</b>	<b>1 083 144</b>	<b>1 095 632</b>							<b>First quintile</b>
Баткенская область	85 501	58 374	956	1 003	548	607	57,3	60,5	Batken oblast
Джалал-Абадская область	226 783	222 559	996	973	631	569	63,3	58,5	Djalal-Abad oblast
Иссык-Кульская область	160 587	138 061	757	832	632	682	83,5	82,0	Issyk-Kul oblast
Нарынская область	100 681	100 595	797	842	371	375	46,5	44,6	Naryn oblast
Ошская область	275 988	325 036	963	1 022	736	759	76,5	74,3	Osh oblast
Таласская область	75 298	71 369	807	887	529	519	65,6	58,5	Talas oblast
Чуйская область	102 069	128 481	861	987	653	785	75,8	79,5	Chui oblast
г.Бишкек	56 238	51 156	900	1 012	1 129	1 104	125,4	109,1	Bishkek city
Средневзвешенный баланс			900	957	648	671	72,0	70,1	Average weighted balance

**Таблица 6: (продолжение)**  
**Table 6: (continued)**

	Население, человек		Среднедушевые доходы, сом/чел/месяц		Среднедушевые расходы на питание, сом/чел/месяц		Баланс, %		
	Number, people		Average per capita available income, s/ps/month		Average per capita food expenditure, s/ps/month		Balance, %		
	2009	2010	2009	2010	2009	2010	2009	2010	
<b>Вторая квинтиль</b>	<b>1 084 160</b>	<b>1 095 955</b>							<b>Second quintile</b>
Баткенская область	77 144	116 637	1 420	1 552	675	614	47,6	39,6	Batken oblast
Джалал-Абадская область	296 968	228 688	1 419	1 543	746	698	52,5	45,3	Djalal-Abad oblast
Иссык-Кульская область	87 677	87 294	1 393	1 549	797	913	57,2	59,0	Issyk-Kul oblast
Нарынская область	50 205	50 756	1 396	1 524	542	628	38,8	41,2	Naryn oblast
Ошская область	247 427	302 752	1 463	1 486	949	1 031	64,9	69,4	Osh oblast
Таласская область	55 118	57 005	1 414	1 507	813	668	57,5	44,3	Talas oblast
Чуйская область	152 086	123 041	1 468	1 497	963	978	65,6	65,4	Chui oblast
г.Бишкек	117 535	129 781	1 421	1 535	1 244	1 254	87,5	81,6	Bishkek city
Средневзвешенный баланс			1 433	1 520	870	891	60,7	58,6	Average weighted balance

Таблица 6: (продолжение)  
Table 6: (continued)

	Население, человек		Среднедушевые доходы, сом/чел/месяц		Среднедушевые расходы на питание, сом/чел/месяц		Баланс, %		
	Number, people		Average per capita available income, s/ps/month		Average per capita food expenditure, s/ps/month		Balance, %		
	2009	2010	2009	2010	2009	2010	2009	2010	
<b>Третья квинтиль</b>	<b>1 084 813</b>	<b>1 100 695</b>							<b>Third quintile</b>
Баткенская область	114 761	105 558	1 876	2 073	703	747	37,5	36,0	Batken oblast
Джалал-Абадская область	170 209	208 410	1 906	2 048	855	837	44,9	40,9	Djalal-Abad oblast
Иссык-Кульская область	79 878	72 436	1 892	2 020	886	983	46,8	48,7	Issyk-Kul oblast
Нарынская область	35 282	37 842	1 859	2 065	722	510	38,9	24,7	Naryn oblast
Ошская область	292 031	290 740	1 882	2 044	1 110	1 156	59,0	56,5	Osh oblast
Таласская область	52 520	33 246	1 868	2 040	826	879	44,2	43,1	Talas oblast
Чуйская область	169 269	177 345	1 956	2 062	1 145	1 332	58,6	64,6	Chui oblast
г.Бишкек	170 862	175 118	1 910	2 071	1 433	1 380	75,0	66,6	Bishkek city
Средневзвешенный баланс			1 900	2 054	1 040	1 078	54,7	52,5	Average weighted balance

**Таблица 6: (продолжение)**  
**Table 6: (continued)**

	Население, человек		Среднедушевые доходы, сом/чел/месяц		Среднедушевые расходы на питание, сом/чел/месяц		Баланс, %		
	Number, people		Average per capita available income, s/ps/month		Average per capita food expenditure, s/ps/month		Balance, %		
	2009	2010	2009	2010	2009	2010	2009	2010	
<b>Четвертая квинтиль</b>	<b>1 080 026</b>	<b>1 090 801</b>							<b>Fourth quintile</b>
Баткенская область	95 309	89 500	2 548	2 808	918	934	36,0	33,2	Batken oblast
Джалал-Абадская область	181 917	214 904	2 623	2 751	1 170	971	44,6	35,3	Djalal-Abad oblast
Иссык-Кульская область	64 007	67 189	2 516	2 850	1 019	1 101	40,5	38,6	Issyk-Kul oblast
Нарынская область	44 925	39 812	2 510	2 805	669	719	26,6	25,6	Naryn oblast
Ошская область	235 829	247 337	2 552	2 832	1 338	1 257	52,4	44,4	Osh oblast
Таласская область	29 637	37 685	2 529	2 792	1 149	1 037	45,5	37,1	Talas oblast
Чуйская область	161 522	166 468	2 619	2 789	1 106	1 475	42,2	52,9	Chui oblast
г.Бишкек	266 880	227 907	2 595	2 790	1 582	1 447	61,0	51,9	Bishkek city
Средневзвешенный баланс			2 580	2 798	1 246	1 210	48,3	43,3	Average weighted balance

**Таблица 6: (продолжение)**  
**Table 6: (continued)**

	Население, человек		Среднедушевые доходы, сом/чел/месяц		Среднедушевые расходы на питание, сом/чел/месяц		Баланс, %		
	Number, people		Average per capita available income, s/ps/month		Average per capita food expenditure, s/ps/month		Balance, %		
	2009	2010	2009	2010	2009	2010	2009	2010	
<b>Пятая квинтиль</b>	<b>1 086 156</b>	<b>1 094 538</b>							<b>Fifth quintil</b>
Баткенская область	61 087	71 032	4 585	4 940	992	1 396	21,6	28,3	Batken oblast
Джалал-Абадская область	147 255	162 084	4 861	5 012	1 365	1 200	28,1	24,0	Djalal-Abad oblast
Иссык-Кульская область	49 174	79 540	4 499	6 949	1 616	1 590	35,9	22,9	Issyk-Kul oblast
Нарынская область	28 285	33 132	4 406	5 109	1 221	1 078	27,7	21,1	Naryn oblast
Ошская область	325 683	220 869	4 563	5 011	1 655	1 708	36,3	34,1	Osh oblast
Таласская область	16 422	32 514	5 602	5 055	1 370	1 185	24,5	23,4	Talas oblast
Чуйская область	223 298	219 535	4 578	5 147	1 645	1 717	35,9	33,4	Chui oblast
г.Бишкек	234 952	275 833	5 147	4 898	2 161	2 138	42,0	43,7	Bishkek city
Средневзвешенный баланс			4 743	5 150	1 669	1 680	35,2	32,6	Average weighted balance

**Таблица 7: Продовольственный баланс домохозяйств в стоимостном выражении по результатам обследований уровня жизни**  
(все население по расходным квинтильным группам и регионам, сомов)

**Table 7: Household Food Balance expressed in value terms based on results of surveys of living standard**  
(total population by expenditure quintile groups and by regions, som)

	Население, человек		Общие среднедушевые расходы, сом/чел/месяц		Среднедушевые расходы на питание, сом/чел/месяц		Баланс, %		
	2009	2010	2009	2010	2009	2010	2009	2010	
<b>Все население</b>	<b>5 418 299</b>	<b>5 477 620</b>							<b>Total population</b>
Баткенская область	433 802	441 101	1 862	2 099	756	836	40,6	39,8	Batken oblast
Джалал-Абадская область	1 023 132	1 036 644	1 658	1 837	903	834	54,5	45,4	Djalal-Abad oblast
Иссык-Кульская область	441 323	444 520	1 674	2 133	877	1 002	52,4	47,0	Issyk-Kul oblast
Нарынская область	259 378	262 137	1 630	1 939	596	585	36,6	30,2	Naryn oblast
Ошская область	1 376 957	1 386 734	2 346	2 435	1 174	1 141	50,1	46,9	Osh oblast
Таласская область	228 995	231 819	1 621	1 755	806	785	49,7	44,7	Talas oblast
Чуйская область	808 245	814 870	2 571	2 837	1 179	1 325	45,9	46,7	Chui oblast
г.Бишкек	846 467	859 795	3 451	3 531	1 636	1 605	47,4	45,5	Bishkek city
Средневзвешенный баланс			2 264	2 449	1 095	1 106	48,4	45,1	Average weighted balance



Таблица 7: (продолжение)

Table 7: (continued)

	Население, человек		Общие среднедушевые расходы, сом/чел/месяц		Среднедушевые расходы на питание, сом/чел/месяц		Баланс, %		
	Number, people		Total per capita expenditures, s/ps/month		Average per capita food expenditure, s/ps/month		Balance, %		
	2009	2010	2009	2010	2009	2010	2009	2010	
<b>Первая квинтиль</b>	<b>1 084 595</b>	<b>1 095 459</b>							<b>First quintile</b>
Баткенская область	115 795	136 110	963	953	453	484	47,0	50,7	Batken oblast
Джалал-Абадская область	338 195	359 822	927	962	537	449	58,0	46,6	Djalal-Abad oblast
Иссык-Кульская область	157 119	113 660	886	967	536	549	60,5	56,8	Issyk-Kul oblast
Нарынская область	114 855	114 713	786	870	298	340	38,0	39,1	Naryn oblast
Ошская область	168 012	204 554	970	950	605	573	62,4	60,3	Osh oblast
Таласская область	90 870	81 211	908	974	454	448	50,0	46,0	Talas oblast
Чуйская область	84 792	76 742	908	961	540	530	59,5	55,1	Chui oblast
г.Бишкек	14 956	8 647	948	832	551	360	58,1	43,2	Bishkek city
Средневзвешенный баланс			914	949	507	480	55,5	50,6	Average weighted balance

Таблица 7: (продолжение)

Table 7: (continued)

	Население, человек		Общие среднедушевые расходы, сом/чел/месяц		Среднедушевые расходы на питание, сом/чел/месяц		Баланс, %		
	Number, people		Total per capita expenditures, s/ps/month		Average per capita food expenditure, s/ps/month		Balance, %		
	2009	2010	2009	2010	2009	2010	2009	2010	
<b>Вторая квинтиль</b>	<b>1 083 113</b>	<b>1 095 561</b>							<b>Second quintile</b>
Баткенская область	114 626	103 062	1 373	1 489	687	694	50,1	46,6	Batken oblast
Джалал-Абадская область	293 637	286 832	1 384	1 505	737	749	53,2	49,8	Djalal-Abad oblast
Иссык-Кульская область	115 770	101 507	1 334	1 484	708	736	53,1	49,6	Issyk-Kul oblast
Нарынская область	48 963	48 791	1 383	1 489	540	515	39,0	34,6	Naryn oblast
Ошская область	311 754	303 705	1 413	1 510	788	801	55,8	53,1	Osh oblast
Таласская область	58 823	64 531	1 372	1 464	798	723	58,2	49,3	Talas oblast
Чуйская область	101 325	137 602	1 352	1 492	687	817	50,8	54,7	Chui oblast
г.Бишкек	38 214	49 531	1 369	1 555	694	764	50,7	49,1	Bishkek city
Средневзвешенный баланс			1 382	1 500	732	754	53,0	50,3	Average weighted balance

Таблица 7: (продолжение)  
Table 7: (continued)

	Население, человек		Общие среднедушевые расходы, сом/чел/месяц		Среднедушевые расходы на питание, сом/чел/месяц		Баланс, %		
	Number, people		Total per capita expenditures, s/ps/month		Average per capita food expenditure, s/ps/month		Balance, %		
	2009	2010	2009	2010	2009	2010	2009	2010	
<b>Третья квинтиль</b>	<b>1 084 616</b>	<b>1 096 797</b>							<b>Third quintile</b>
Баткенская область	97 938	80 861	1 827	1 975	809	851	44,3	43,1	Batken oblast
Джалал-Абадская область	185 686	195 147	1 822	1 991	981	1 019	53,9	51,2	Djalal-Abad oblast
Иссык-Кульская область	67 294	111 659	1 821	2 008	985	1 005	54,1	50,1	Issyk-Kul oblast
Нарынская область	36 756	34 812	1 886	1 979	708	738	37,5	37,3	Naryn oblast
Ошская область	331 345	350 775	1 876	2 029	948	1 044	50,5	51,4	Osh oblast
Таласская область	40 098	44 400	1 850	2 003	975	983	52,7	49,1	Talas oblast
Чуйская область	197 404	125 749	1 830	2 073	920	1 043	50,3	50,3	Chui oblast
г.Бишкек	128 096	153 394	1 907	2 070	1 070	1 003	56,1	48,4	Bishkek city
Средневзвешенный баланс			1 854	2 024	946	1 003	51,0	49,6	Average weighted balance

Таблица 7: (продолжение)

Table 7: (continued)

	Население, человек		Общие среднедушевые расходы, сом/чел/месяц		Среднедушевые расходы на питание, сом/чел/месяц		Баланс, %		
	Number, people		Total per capita expenditures, s/ps/month		Average per capita food expenditure, s/ps/month		Balance, %		
	2009	2010	2009	2010	2009	2010	2009	2010	
<b>Четвертая квинтиль</b>	<b>1 082 555</b>	<b>1 094 392</b>							<b>Fourth quintile</b>
Баткенская область	61 820	55 934	2 545	2 659	1 011	1 113	39,7	41,9	Batken oblast
Джалал-Абадская область	123 821	121 325	2 506	2 681	1 367	1 351	54,6	50,4	Djalal-Abad oblast
Иссык-Кульская область	59 856	59 821	2 459	2 693	1 199	1 313	48,8	48,7	Issyk-Kul oblast
Нарынская область	30 815	36 427	2 462	2 769	878	829	35,7	29,9	Naryn oblast
Ошская область	269 487	285 712	2 534	2 692	1 287	1 301	50,8	48,3	Osh oblast
Таласская область	24 558	26 131	2 480	2 671	1 273	1 148	51,3	43,0	Talas oblast
Чуйская область	211 595	253 941	2 536	2 758	1 185	1 347	46,7	48,8	Chui oblast
г.Бишкек	300 602	255 100	2 589	2 785	1 316	1 317	50,8	47,3	Bishkek city
Средневзвешенный баланс			2 540	2 728	1 252	1 293	49,3	47,4	Average weighted balance

Таблица 7: (продолжение)

Table 7: (continued)

	Население, человек		Общие среднедушевые расходы, сом/чел/месяц		Среднедушевые расходы на питание, сом/чел/месяц		Баланс, %		
	Number, people		Total per capita expenditures, s/ps/month		Average per capita food expenditure, s/ps/month		Balance, %		
	2009	2010	2009	2010	2009	2010	2009	2010	
<b>Пятая квинтиль</b>	<b>1 083 420</b>	<b>1 095 411</b>							<b>Fifth quintile</b>
Баткенская область	43 623	65 135	4 650	5 131	1 257	1 536	27,0	29,9	Batken oblast
Джалал-Абадская область	81 793	73 518	4 002	5 607	2 129	1 702	53,2	30,4	Djalal-Abad oblast
Иссык-Кульская область	41 283	57 873	4 245	5 220	2 001	2 034	47,1	39,0	Issyk-Kul oblast
Нарынская область	27 990	27 395	4 275	6 062	1 458	1 215	34,1	20,0	Naryn oblast
Ошская область	296 358	241 989	4 460	5 135	2 053	2 003	46,0	39,0	Osh oblast
Таласская область	14 646	15 544	4 985	4 795	1 774	1 627	35,6	33,9	Talas oblast
Чуйская область	213 129	220 835	4 532	4 853	1 900	2 054	41,9	42,3	Chui oblast
г.Бишкек	364 598	393 124	5 025	4 894	2 241	2 161	44,6	44,2	Bishkek city
Средневзвешенный баланс			4 631	5 046	2 039	1 999	44,0	39,6	Average weighted balance

**Таблица 8. Доля населения, не имеющего доступа к доброкачественной питьевой воде**

*(процентов)*

**Table 8. The share of population without access to clean drinking water**

%	2005	2006	2007	2008	2009	2010	
<b>Кыргызская Республика</b>	<b>15,6</b>	<b>10,2</b>	<b>7,0</b>	<b>9,6</b>	<b>9,6</b>	<b>8,5</b>	<b>Kyrgyz Republic</b>
Баткенская область	28,4	19,1	19,7	23,3	27,2	27,3	Batken oblast
Джалал-Абадская область	7,1	5,6	5,1	5,6	5,6	5,0	Djalal-Abad oblast
Иссык-Кульская область	4,1	4,5	4,2	0,7	0,7	1,2	Issyk-Kul oblast
Нарынская область	11,9	40,1	11,4	8,0	4,1	9,9	Naryn oblast
Ошская область	40,7	24,9	17,0	22,7	22,9	17,7	Osh oblast
Таласская область	2,7	1,6	0,7	4,1	3,9	3,1	Talas oblast
Чуйская область	3,9	0,7	0,4	1,4	1,1	1,0	Chui oblast
г. Бишкек	0,0	0,0	0,0	0,0	0,0	0,0	Bishkek city

Источник: По результатам интегрированного обследования 5016 домашних хозяйств.

Source: According to the results of Integrated Household Survey (5016 h/h).

**Таблица 9. Доля детей, страдающих отставанием в весе**  
(процентов)

**Table 9. The share of children suffering from underweight**  
%

	2005	2006	2007	2008	2009	2010	
<b>Кыргызская Республика</b>	<b>5,6</b>	<b>6,1</b>	<b>5,7</b>	<b>6,4</b>	<b>4,6</b>	<b>7,4</b>	<b>Kyrgyz Republic</b>
Баткенская область	4,3	2,2	5,2	3,4	4,1	2,3	Batken oblast
Джалал-Абадская область	3,6	2,5	7,4	7,3	3,6	2,1	Djalal-Abad oblast
Иссык-Кульская область	5,0	8,1	7,1	8,5	4,0	9,1	Issyk-Kul oblast
Нарынская область	6,7	3,0	5,3	4,7	4,2	16,9	Naryn oblast
Ошская область (вкл. г.Ош)	7,0	8,3	2,2	5,2	5,6	12,1	Osh oblast (including Osh city)
Таласская область	4,7	7,2	9,4	10,8	4,9	10,1	Talas oblast
Чуйская область	10,2	9,9	9,1	10,5	3,9	9,4	Chui oblast
г. Бишкек	4,9	5,5	3,1	4,9	5,0	1,1	Bishkek city

Источник: По результатам интегрированного обследования 5016 домашних хозяйств.

Source: According to the results of Integrated Household Survey (5016 h/h).

**Таблица 11. Индикаторы в области социальной защиты**

**Table 11. Social Protection Indicators**

	2005	2006	2007	2008	2009	2010	
Доля крайне бедного населения, получающего единое ежемесячное пособие (ЕЕП)	27,8	20,0	14,8	23,0	18,0	27,4	Share of the poorest population receiving the one-time monthly payments (OMP)
Доля домохозяйств с тремя и более детьми, получающих ЕЕП	26,7	27,2	19,6	18,9	22,9	22,5	Share of households with three or more children receiving the one-time monthly payments (OMP)
Доля домохозяйств, состоящих из одного взрослого и детей , получающих ЕЕП	6,0	9,7	11,9	7,2	8,4	7,9	Share of households consisting of one adult and children receiving the one-time monthly payments (OMP)
Доля домохозяйств, где глава домохозяйства женщина , получающих ЕЕП	4,8	4,5	4,8	4,2	4,6	6,0	Share of households, where woman is the head of the household, receiving the one-time monthly payments (OMP)



**Таблица 8. Индикаторы продовольственной безопасности  
Кыргызской Республики**

**Table 8. Food Security Indicators of the Kyrgyz Republic**

**Таблица 8.1. Уровень суточной энергетической ценности рациона человека  
(ккал)**

**Table 8.1. Level of daily energy value of people diet  
(k/Cal)**

Период/Period	Фактическая ценность рациона <sup>1</sup> /Actual dietary value <sup>1</sup>	Минимальная норма/Minimal ratio	Фактическое значение индикатора (гр. 2/гр.3)/Actual meaning of the indicator (paragraph 2/ paragraph 3)
1	2	3	4
Янв.-март 2007/January- March 2007	2196	2431	0,90
янв.-июнь 2007/January- June 2007	2184	2431	0,90
янв.-сент. 2007/January- September 2007	2253	2431	0,93
2007	2218	2431	0,91
Янв.-март 2008/January- March 2008	2287	2431	0,94
янв.-июнь 2008/January- June 2008	2277	2431	0,94
янв.-сент. 2008/January- September 2008	2299	2431	0,95
2008	2295	2431	0,94
Янв.-март 2009/January- March 2009	2395	2431	0,99
янв.-июнь 2009/January- June 2009	2348	2431	0,97
янв.-сент. 2009/January- September 2009	2356	2101	1,12
2009	2358	2101	1,12
Янв.-март 2010/January- March 2010	2380	2101	1,13
янв.-июнь 2010/January- June 2010	2323	2101	1,11
янв.-сент. 2010/January- September 2010	2305	2102	1,10
2010	2319	2101	1,10

<sup>1</sup> По результатам интегрированного выборочного обследования бюджетов домашних хозяйств и рабочей силы./<sup>1</sup> According to results of the Integrated Sampling Survey of Household Budgets and Labour Force.

**Table 8.2. Sufficiency of selected foods consumption<sup>2</sup>***(average per capita, kg. per month)*

	Actual consumption								
	Bread and bread products	Meat and meat products	Milk and dairy products	Eggs (pieces)	Vegetables and melons	Fruits and berries	Potatoes	Sugar	Vegetable oil
January-March 2007	15,2	3,0	10,8	5,0	12,0	2,1	8,2	1,3	0,5
January-June 2007	15,4	3,0	15,5	5,1	6,2	1,4	8,0	1,5	0,4
январь-сентябрь 2007/January-September 2007	16,2	3,2	17,4	5,1	10,9	2,6	8,4	1,6	0,5
January-March 2008	15,3	2,9	17,4	5,9	12,2	3,0	8,0	1,8	0,5
January-March 2008	15,3	3,0	10,9	5,2	12,2	2,1	8,2	1,4	0,5
January-June 2008	15,4	3,0	15,7	5,2	6,2	1,2	8,0	1,6	0,5
January-September 2008	16,2	3,3	17,4	5,2	11,0	2,0	8,4	1,6	0,6
2008	15,9	3,1	18,1	6,3	12,6	2,5	8,3	1,8	0,6
January-March 2009	16,1	3,2	12,2	5,9	12,7	0,9	8,3	1,7	0,9
January-June 2009	16,0	3,1	16,5	5,5	6,6	0,5	8,4	1,7	0,7
January-September 2009	16,6	3,4	18,1	5,3	12,0	2,2	8,5	1,6	0,6
2009	15,9	3,2	17,7	6,6	12,6	2,5	8,2	1,8	0,7
January-March 2010	16,0	3,4	12,2	6,2	12,6	1,4	8,2	1,7	1,0
January-June 2010	15,9	3,3	16,5	5,6	6,3	0,5	8,3	1,7	1,0
January-September 2010	16,4	3,3	17,8	5,6	12,1	2,3	8,3	1,6	0,7
2010	15,9	3,2	17,7	6,6	12,5	2,5	8,1	1,8	1,0
January-March 2011 <sup>1</sup>	16,1	3,5	12,3	6,2	11,7	1,0	8,3	1,6	1,0
January-June 2011 <sup>1</sup>	15,9	3,3	16,5	5,9	4,4	0,5	8,1	1,7	1,0

<sup>1</sup> Preliminary data<sup>2</sup> Expressed in primary product.

**Таблица 8.3. Экономическая доступность продуктов питания**

*(в среднем на душу населения, сомов в месяц)*

**Table 8.3. Economical availability of foodstuffs**

*(average per capita, soms per month)*

Период/Period	Размер среднемесячных затрат домохозяйств на питание/Monthly average expenditures of households for food	Размер среднемесячных совокупных затрат домохозяйств/Monthly average aggregated expenditures of households	Фактическое значение индикатора (гр. 2/гр.3)*100/Actual meaning of the indicator (paragraph 2/paragraph 3)*100
1	2	3	4
Янв.-март 2007/January-March 2007	567	1178	48
янв.-июнь 2007/January-June 2007	597	1280	47
янв.-сент. 2007/January-September 2007	675	1466	46
2007	720	1579	46
янв.-март 2008/January-March 2008	887	1600	55
янв.-июнь 2008/January-June 2008	984	1890	52
янв.-сент. 2008/January-September 2008	1052	2090	50
2008	1093	2257	48
Янв.-март 2009/January-March 2009	1089	2143	51
янв.-июнь 2009/January-June 2009	1076	2177	49
янв.-сент. 2009/January-September 2009	1089	2136	51
2009	1095	2264	48
Янв.-март 2010/January-March 2010	1018	2198	46
янв.-июнь 2010/January-June 2010	1039	2241	46
янв.-сент. 2010/January-September 2010	1080	2366	46
2010	1106	2449	45

**Таблица 8.4. Дифференциация расходов на питание по социальным группам**

*(в среднем на душу населения, сомов в месяц)*

**Table 8.4. Differentiation of expenditures for food by social groups**

*(average per capita, soms per month)*

<b>Период/Period</b>	<b>Первая квинтильная группа (с наименьшими доходами)/The first quintile group (with the lowest incomes)</b>	<b>Пятая квинтильная группа (с наибольшими доходами)/The fifth quintile group (with the highest incomes)</b>
Янв.-март 2007/January-March 2007	215	1129
янв.-июнь 2007/January-June 2007	243	1143
янв.-сент. 2007/January-September 2007	284	1275
2007	305	1317
янв.-март 2008/January-March 2008	309	1665
янв.-июнь 2008/January-June 2008	399	1792
янв.-сент. 2008/January-September 2008	472	1836
2008	718	1565
Янв.-март 2009/January-March 2009	708	1629
янв.-июнь 2009/January-June 2009	663	1623
янв.-сент. 2009/January-September 2009	670	1635
2009	648	1669
Янв.-март 2010/January-March 2010	614	1574
янв.-июнь 2010/January-June 2010	583	1615
янв.-сент. 2010/January-September 2010	608	1692
2010	671	1680

**Таблица 8.5. Емкость внутреннего рынка отдельных продуктов <sup>2</sup>**

(тыс. тонн)

**Table 8.5. Capacity of internal market of selected products<sup>2</sup>**

(thsd. tons)

	<b>Bread and bread products</b>	<b>Мясо и мясопродукты/Meat and meat products</b>	<b>Milk and dairy products</b>	<b>Яйца (млн. штук)/Eggs (mln. pieces)</b>	<b>Овощи и бахчевые/ Vegetables and melons</b>	<b>Фрукты и ягоды/ Fruits and berries</b>	<b>Картофель/ Potatoes</b>	<b>Сахар/ Sugar</b>	<b>Масло растительное/ Vegetable oil</b>
January-March 2007	237,3	46,3	168,8	78,5	188,4	32,3	128,2	20,0	7,5
January-June 2007	483,1	92,6	487,1	158,7	194,8	43,4	250,1	48,4	13,1
January-September 2007	761,2	150,1	818,9	242,3	512,1	124,3	394,3	75,4	24,9
2007	963,2	182,3	1094,1	371,7	766,8	188,5	502,5	111,1	31,4
January-March 2008	241,6	48,1	171,9	81,7	193,1	32,9	129,5	22,8	7,7
January-June 2008	487,1	93,6	494,9	163,9	196,1	37,5	252,0	50,8	16,1
January-September 2008	770,1	155,0	825,9	248,3	524,0	96,7	396,8	76,4	28,5
2008	968,3	191,8	1103,2	382,4	768,7	152,0	506,7	112,3	35,0
January-March 2009	245,9	49,3	186,7	90,2	194,3	14,1	127,2	25,3	14,3
January-June 2009	491,0	95,1	505,7	168,9	201,4	14,1	258,5	51,3	20,7
January-September 2009	765,4	156,1	832,7	244,3	552,2	99,6	391,8	72,7	28,8
2009	976,9	198,9	1089,5	405,1	774,3	154,4	504,6	109,1	40,4
January-March 2010	248,3	52,8	190,0	96,5	195,9	22,0	127,2	26,3	15,0
January-June 2010	494,1	101,2	511,6	173,7	196,2	14,4	258,4	51,5	30,0
January-September 2010	766,6	153,1	829,8	262,3	563,9	105,8	387,7	74,7	32,8
2010	991,7	201,0	1103,1	412,3	778,9	155,8	504,8	110,6	62,4
January-March 2011 <sup>1</sup>	252,1	54,8	193,6	97,6	184,2	16,4	130,5	25,5	15,1
January-June 2011 <sup>1</sup>	499,4	102,5	518,0	185,7	138,3	14,7	253,9	53,1	31,4

<sup>1</sup> Данные предварительные/Preliminary data

<sup>2</sup> В пересчете на первичный продукт./Expressed in primary product.

**Table 8.6. Balance of actual level of food production in the Kyrgyz Republic**  
(*thsd. tons*)

	Production of main types of food								
	Wheat in net weight	Meat in slaughter weight	Raw milk	Eggs (mln. pieces)	Vegetables and melons	Fruits and berries	Potatoes	Sugar	Vegetable oil
January-March 2007	-	42,2	204,5	70,1	-	-	-	-	4,5
January-June 2007	24,5	84,9	570,8	190,5	32,7	1,8	21,9	9,5	7,4
January-September 2007	678,6	132,3	973,6	293,7	711,6	122,5	974,3	16,0	11,2
2007	708,9	183,1	1240,0	373,7	908,9	180,5	1373,8	36,8	17,6
January-March 2008	-	42,8	210,0	72,7	-	-	-	6,6	4,2
January-June 2008	37,9	85,6	586,2	193,1	39,4	6,8	22,1	10,7	7,6
January-September 2008	720,0	133,3	998,7	292,4	742,5	140,8	976,7	10,8	11,0
2008	746,2	184,2	1273,5	369,3	947,0	185,4	1334,9	10,9	18,3
January-March 2009	-	43,3	216,7	67,9	-	-	-	0,0	4,9
January-June 2009	29,0	86,8	607,1	186,1	41,9	4,8	25,4	0,1	7,8
January-September 2009	943,3	135,1	1032,6	291,1	791,4	155,8	899,3	0,2	12,1
2009	1056,7	185,5	1314,7	369,3	969,7	200,5	1393,1	5,9	20,6
January-March 2010	-	44,1	224,2	71,5	-	-	-	0,0	5,6
January-June 2010	9,5	88,1	628,4	191,4	28,0	3,7	19,0	0,0	9,5
January-September 2010	756,3	138,7	1070,6	294,4	803,4	146,0	781,3	0,1	12,8
2010	813,3	187,8	1359,9	373,1	969,3	193,1	1339,4	14,0	18,1
January-March 2011 <sup>1</sup>	-	44,4	223,8	73,8	-	-	-	0,0	4,7
January-June 2011 <sup>1</sup>	11,1	89,0	627,5	201,8	31,9	4,1	22,4	0,0	8,1

<sup>1</sup> Данные предварительные/Preliminary data

Order No.    Copies: 35  
Information and Publishing Department  
of the Main Computing Center of the Natstatcom  
of the Kyrgyz Republic

«\_8\_\_\_\_\_» September 2011